

Phytoplankton abundance:

6.3×10^4 cells ml⁻¹

Phytoplankton groups percentage:

diatoms: 73.2%, flagellates: 22.4%,
coccolithophores: 2.5%, dinoflagellates: 1.9%

Most abundant diatom species:

Skeletonema menzelii (13.4%)

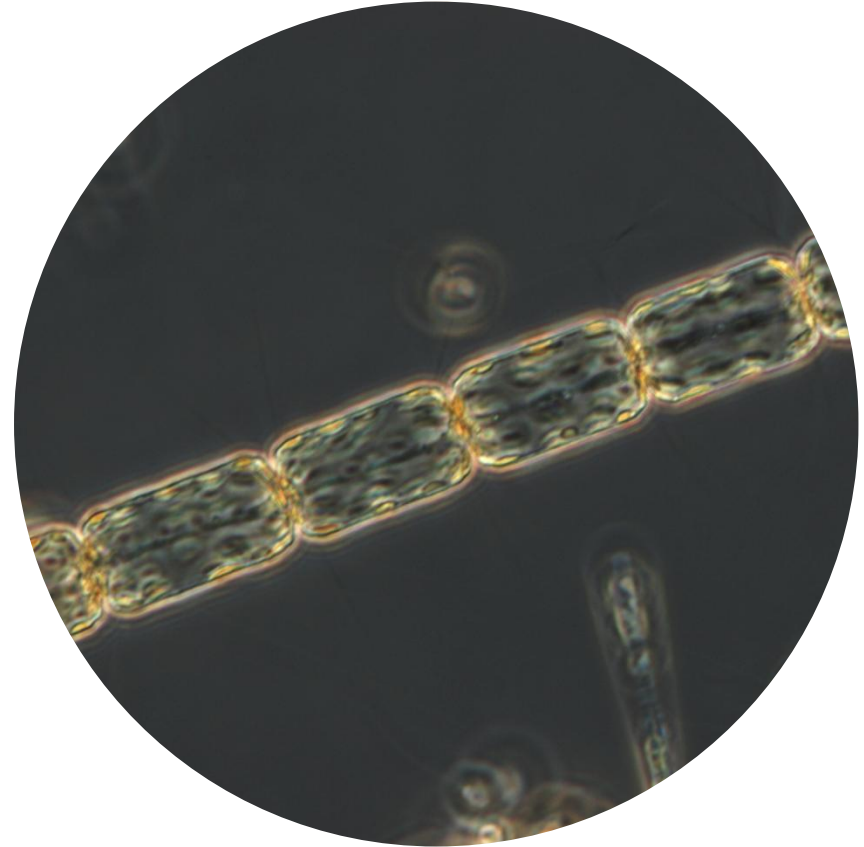
Thalassiosira spp. (10.1%)

Most abundant species in the net sample:

Tenuicylindrus belgicus

Pseudo-nitzschia multistriata

NOTES:



Live sample

Main species in the picture: Lauderia annulata