

Phytoplankton abundance:

1.2×10^4 cells ml⁻¹

Phytoplankton groups percentage:

flagellates: 79.3%, diatoms: 19.8%,
coccolithophores: 0.9%, dinoflagellates: 0%

Most abundant taxa:

Heterotroph flagellates (59.2%)

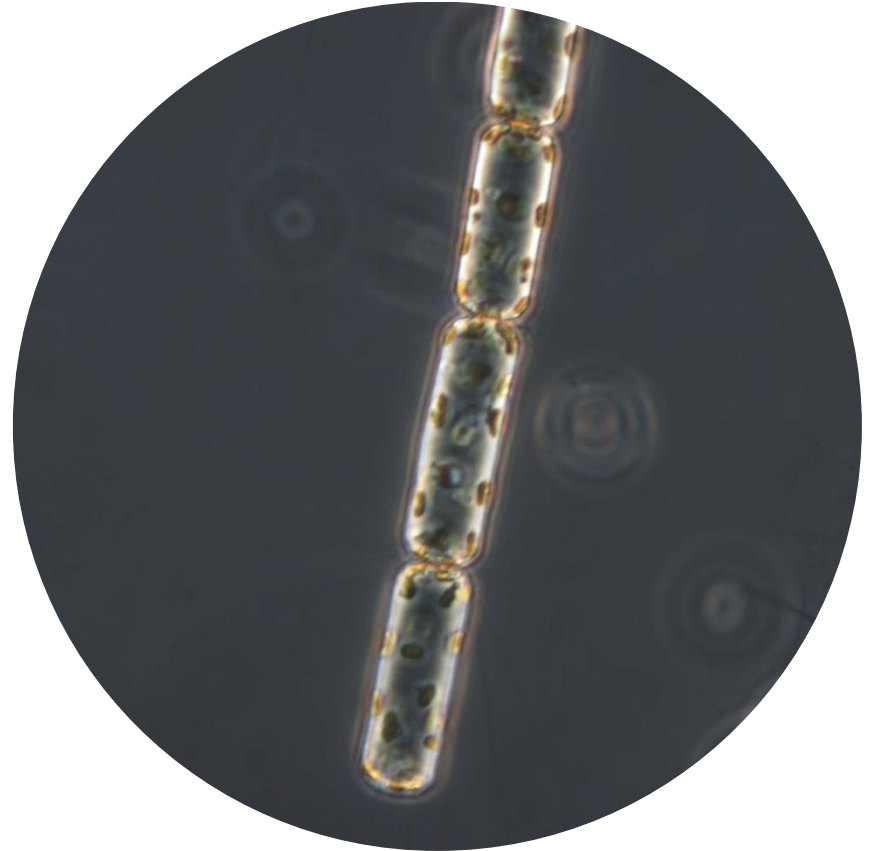
Chaetoceros socialis (10.6%)

Most abundant species in the net sample:

Chaetoceros socialis

Leptocylindrus danicus

NOTES: preliminary quantitative analysis



Live sample

Main species in the picture: Lauderia annulata