

Phytoplankton abundance:

$8.1 \times 10^2 \text{ cells ml}^{-1}$

Phytoplankton groups percentage:

flagellates: 79.7%, diatoms: 1.6%,
coccolithophores: 17.9%, dinoflagellates: 0.8%

Most abundant taxa:

Emiliana huxleyi (17.9%)

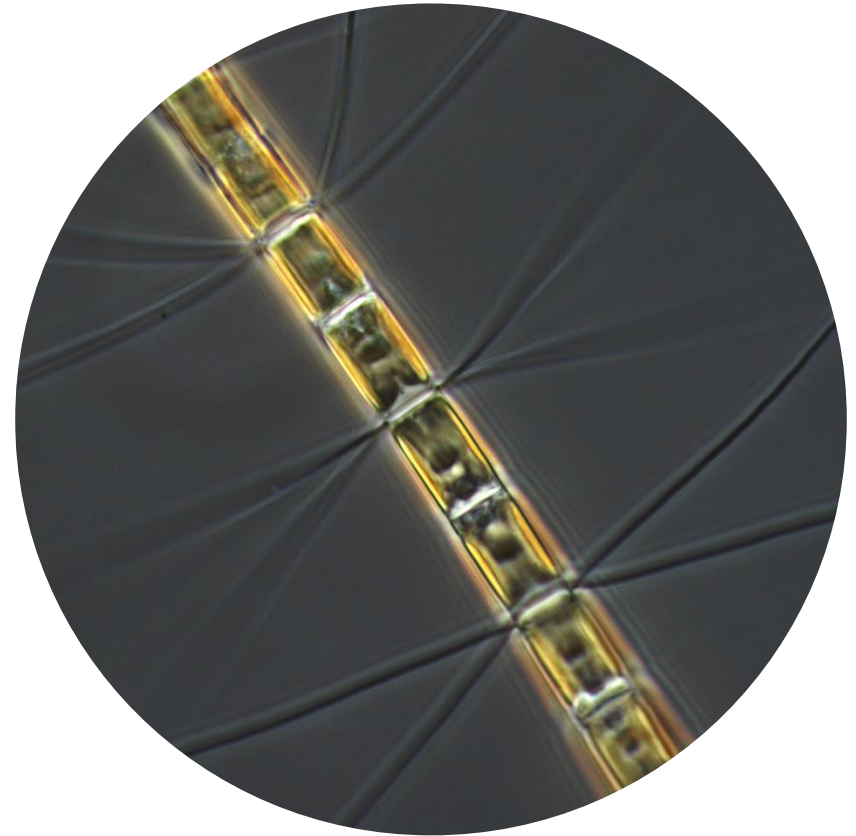
Most abundant species in the net sample:

Chaetoceros curvisetus

Chaetoceros pseudocurvisetus

Chaetoceros affinis

NOTES:



Live sample

Main species in the picture: Chaetoceros affinis