

Phytoplankton abundance:

7.7×10^3 cells ml⁻¹

Phytoplankton groups percentage:

diatoms: 84.2%, flagellates: 13.5%,
coccolithophores: 0.7%, dinoflagellates: 1.6%,

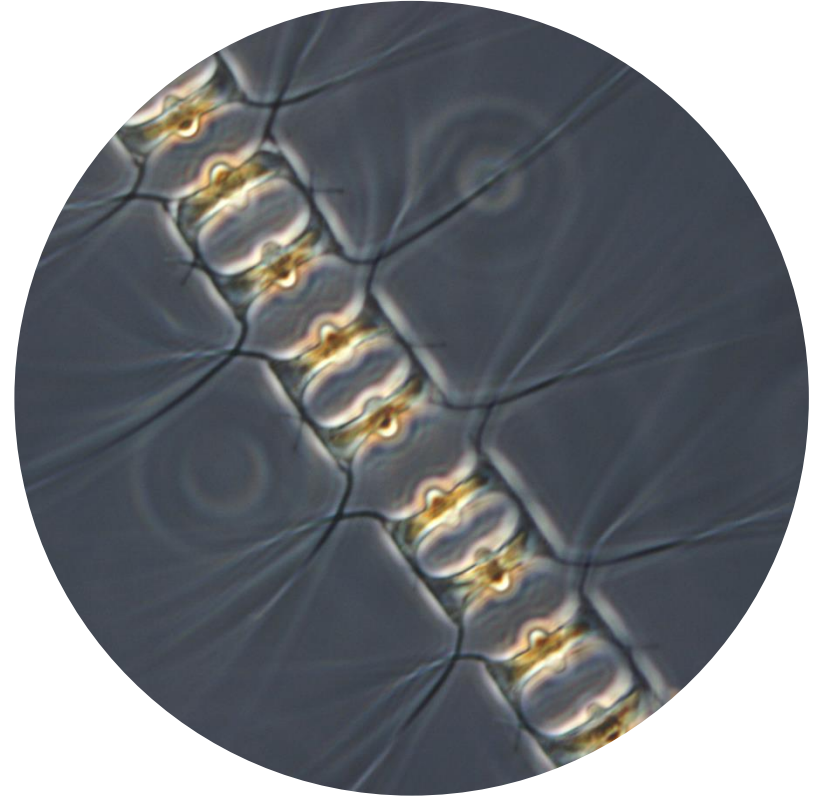
Most abundant taxa:

Chaetoceros tenuissimus (60.1%)
Pseudo-nitzschia galaxiae (7.9%)

Most abundant species in the net sample:

Chaetoceros sp.A
Chaetoceros curvisetus

NOTES:



Live sample

Main species in the picture: Chaetoceros protuberans