

Phytoplankton abundance:

9.7×10^3 cells ml⁻¹

Phytoplankton groups percentage:

diatoms: 64.0%, flagellates: 33.7%,
dinoflagellates: 1.6%, coccolithophores: 0.7%

Most abundant taxa:

Chaetoceros tenuissimus (24.0%)

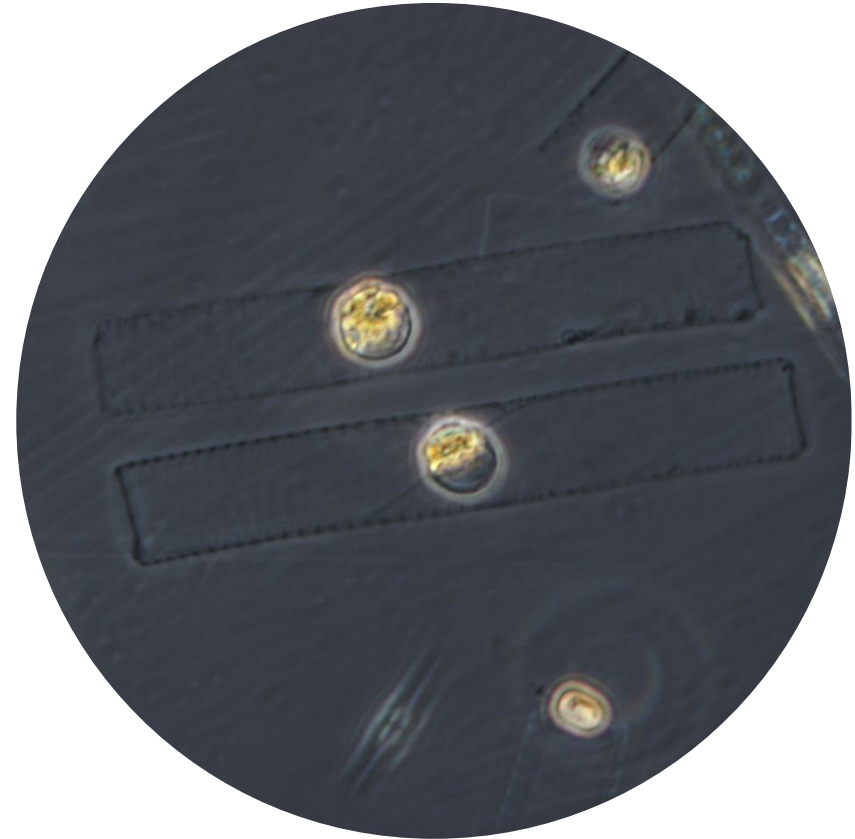
Chaetoceros thronsenii (6.6%)

Most abundant species in the net sample:

Leptocylindrus danicus

Dactyliosolen blavyanus

NOTES: preliminary quantitative analysis



Live sample

Main species in the picture: dactyliosolen blavyanus