

Phytoplankton abundance:

2.9×10^3 cells ml⁻¹

Phytoplankton groups percentage:

flagellates: 54.1%, diatoms: 37.3%,
dinoflagellates: 3.2%, coccolithophores: 5.4%

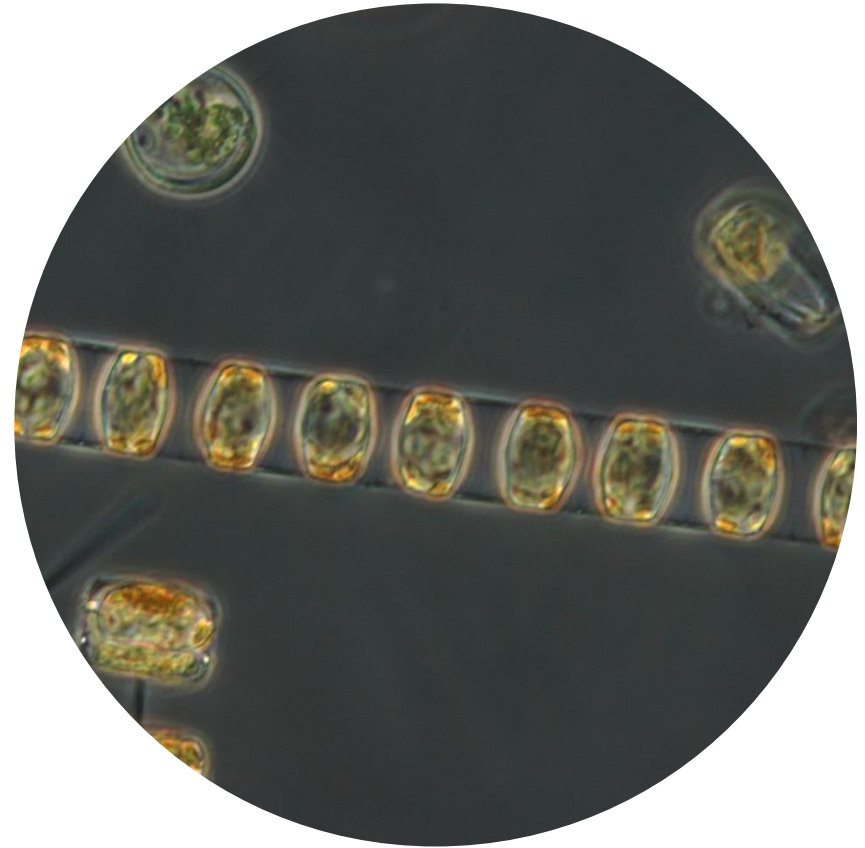
Most abundant taxa:

Centric diatoms < 5 μ m (18.0%)
Emiliana huxleyi (4.8%)

Most abundant species in the net sample:

Thalassiosira rotula
Skeletonema tropicum

NOTES: preliminary quantitative analysis



Live sample

Main species in the picture: Skeletonema tropicum