

Phytoplankton abundance:

1.6×10^4 cells ml^{-1}

Phytoplankton groups percentage:

flagellates: 64.0%, diatoms: 29.7%,

dinoflagellates: 4.5%, coccolithophores: 1.8%

Most abundant taxa:

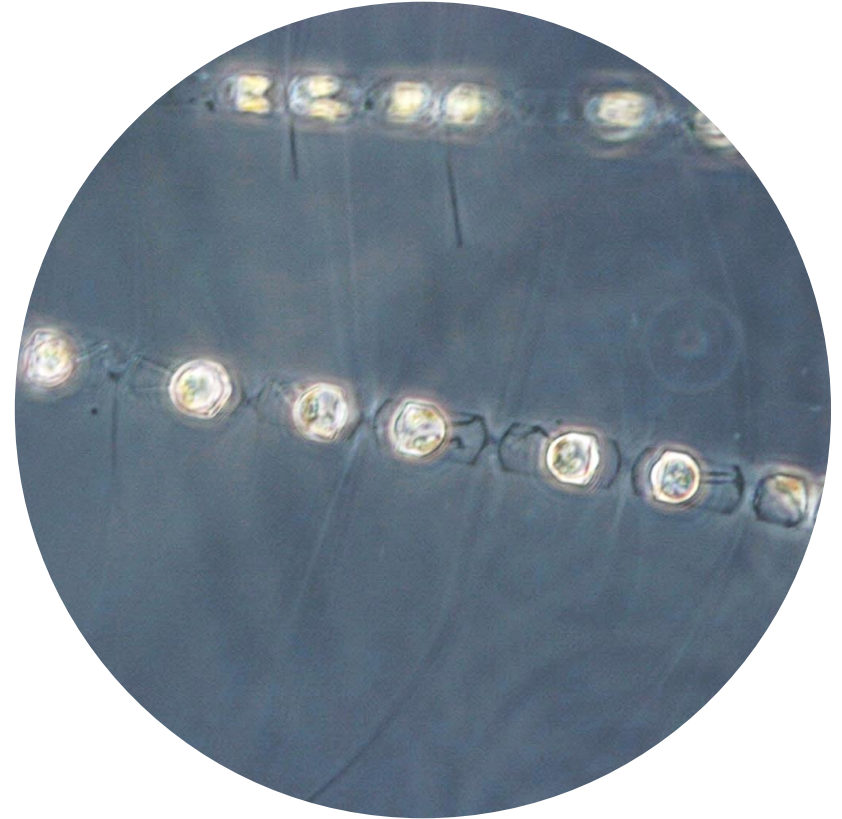
Chaetoceros vixvisibilis (12.3%)

Chaetoceros tenuissimus (4.4%)

Most abundant species in the net sample:

Chaetoceros vixvisibilis

NOTES:



Live sample

Main species in the picture: *Chaetoceros vixvisibilis* with spores