

### Phytoplankton abundance:

$8.4 \times 10^3$  cells ml<sup>-1</sup>

### Phytoplankton groups percentage:

diatoms: 78.9%, flagellates: 18.6%,  
coccolithophores: 2.1%, dinoflagellates: 0.4%

### Most abundant taxa:

*Chaetoceros tenuissimus* (25.8%)

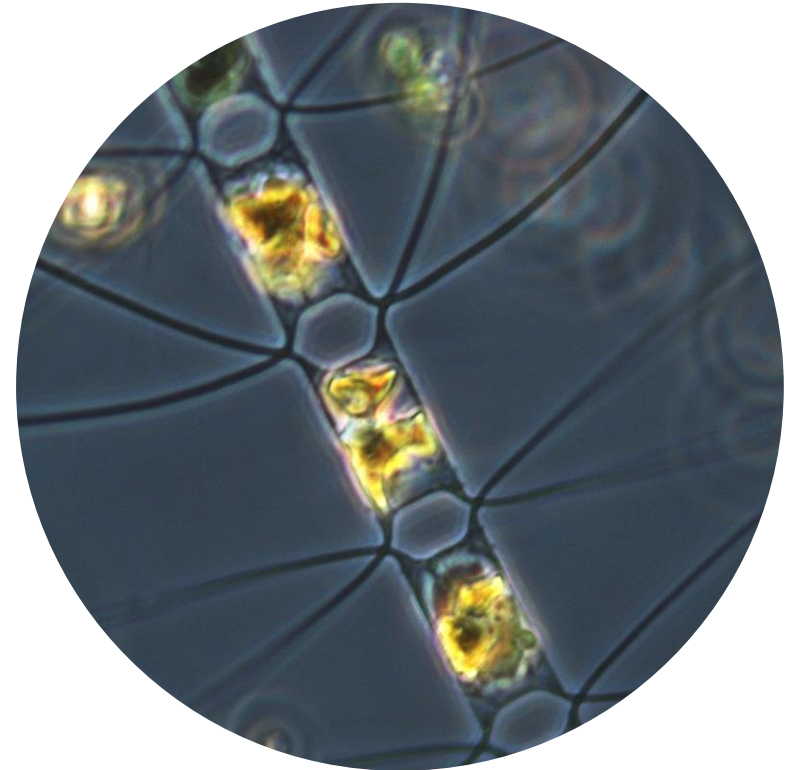
*Chaetoceros* spp. (18.3%)

### Most abundant species in the net sample:

*Chaetoceros* cf. *lorenzianus*

*Pseudo-nitzschia delicatissima*

### NOTES:



**Live sample**

*Main species in the picture: Chaetoceros* cf. *lorenzianus*