

## Phytoplankton abundance:

$1.0 \times 10^4$  cells ml<sup>-1</sup>

## Phytoplankton groups percentage:

diatoms: 54.3%, flagellates: 54.6%,

dinoflagellates: 1.3%, coccolithophores: 0.9%

## Most abundant taxa:

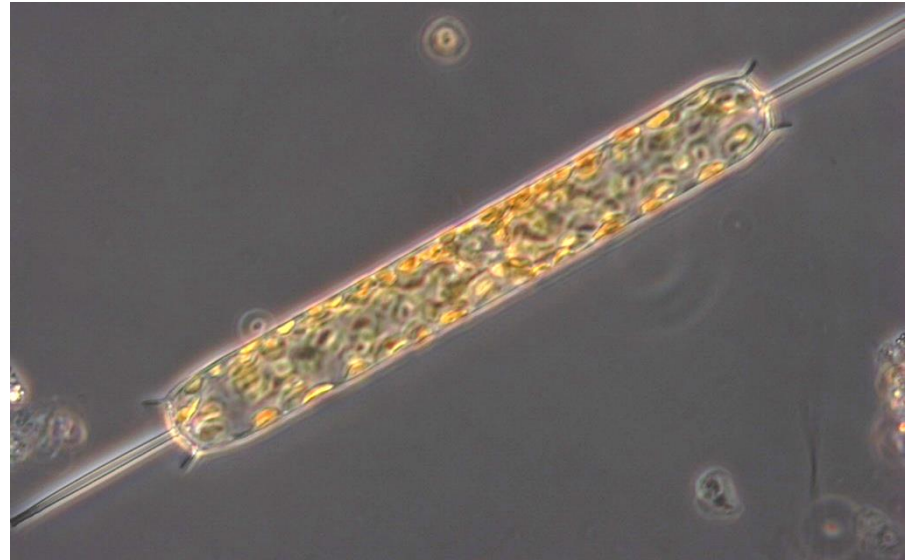
*Thalassiosira* spp. (32.5%)

*Chaetoceros tenuissimus* (15.3%)

## Most abundant species in the net sample:

*No dominant species*

## NOTES:



### *Live sample*

*Main species in the picture: Ditylum brightwellii*