

**Phytoplankton abundance:**

$4.4 \times 10^3$  cells ml<sup>-1</sup>

**Phytoplankton groups percentage:**

flagellates: 59.9%, diatoms: 37.3%,  
coccolithophores: 1.7%, dinoflagellates: 1.1%

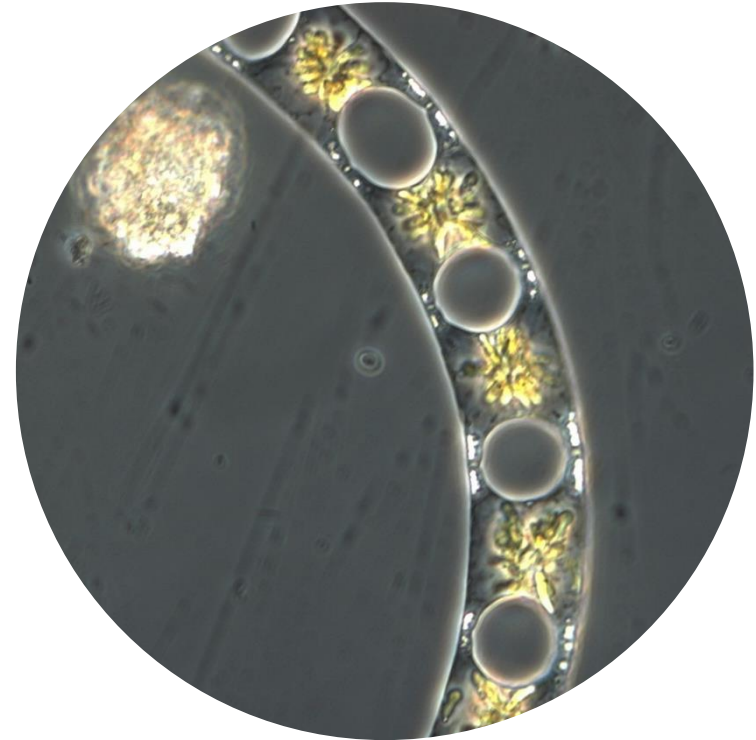
**Most abundant taxa:**

*Chaetoceros tenuissimus* (32.5%)  
Undetermined Cryptophyceae (10.1%)

**Most abundant species in the net sample:**

*Very diversified assemblage with no dominant species*

**NOTES:**



**Live sample**

*Main species in the picture: Eucampia zoodiacus*