

Phytoplankton abundance:

2.3×10^4 cells ml⁻¹

Long-term average (May, 1984-2018):

$2.4 \times 10^3 \pm 1.4 \times 10^3$ cells ml⁻¹

Phytoplankton groups percentage:

diatoms: 54.0%, flagellates: 44.7%,

dinoflagellates: 1.2%, coccolithophores: 0.1%

Most abundant taxa:

Pseudo-nitzschia galaxiae (19.0%)

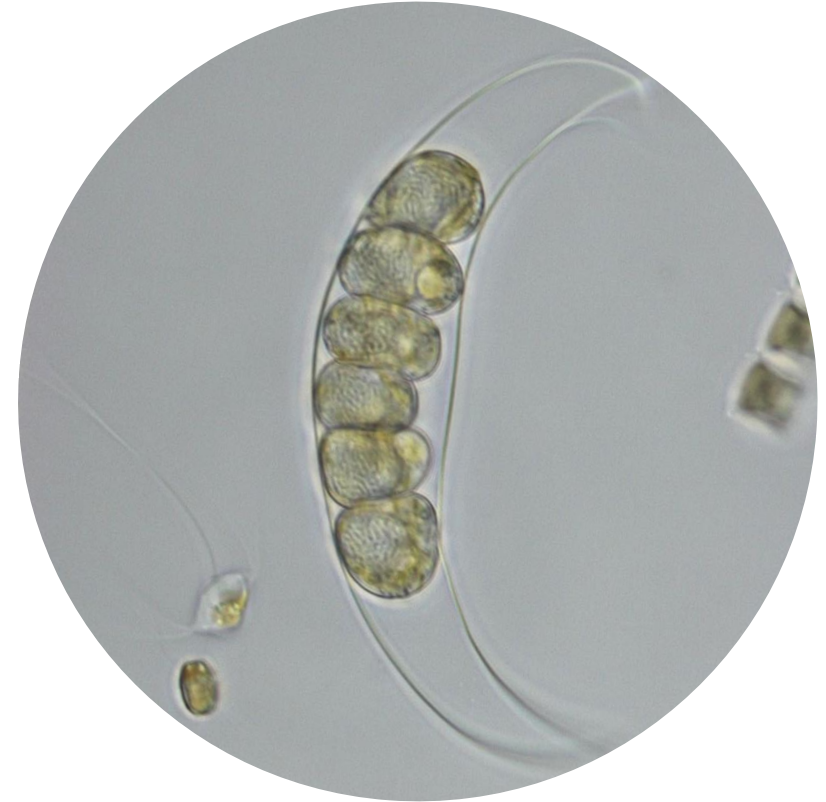
Chaetoceros curvisetus (10.0%)

Most abundant species in the net sample:

Chaetoceros curvisetus

Alexandrium insuetum

NOTES:



Live sample

Main species in the picture: *Pyrocystis lunula*