

Phytoplankton abundance:

4.8×10^4 cells ml⁻¹

Long-term average (May, 1984-2018):

$2.4 \times 10^4 \pm 1.4 \times 10^4$ cells ml⁻¹

Phytoplankton groups percentage:

diatoms: 70.3%, flagellates: 28.6%,

dinoflagellates: 0.9%, coccolithophores: 0.2%

Most abundant taxa:

Pseudo-nitzschia galaxiae (25.3%)

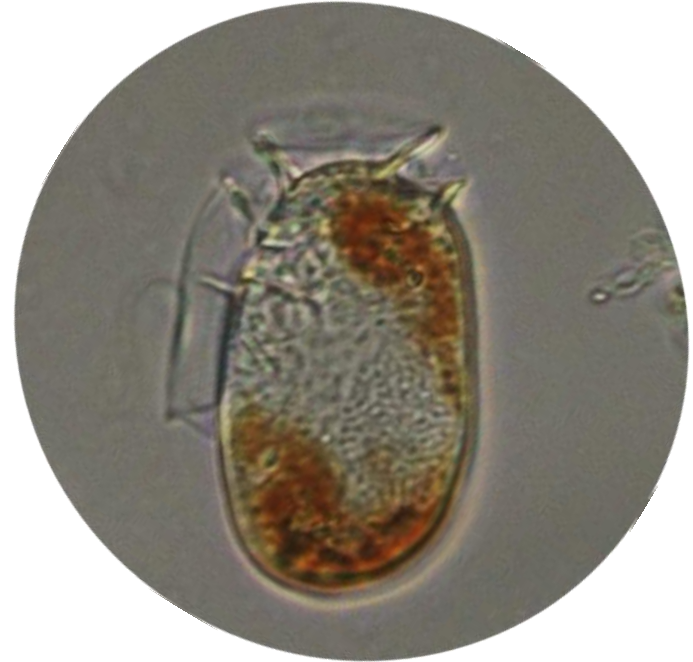
Skeletonema pseudocostatum (25.1%)

Most abundant species in the net sample:

Pseudo-nitzschia galaxiae

Chaetoceros tenuissimus

NOTES:



Live sample

Main species in the picture: *Dinophysis sacculus*