

Phytoplankton abundance:

3.8×10^3 cells ml⁻¹

Long-term average (December, 1984-2018):

$7.2 \times 10^2 \pm 4.8 \times 10^2$ cells ml⁻¹

Phytoplankton groups percentage:

diatoms: 61.0%, flagellates: 36.5%,
coccolithophores: 1.9%, dinoflagellates: 0.6%

Most abundant taxa:

Chaetoceros socialis (47.6%)

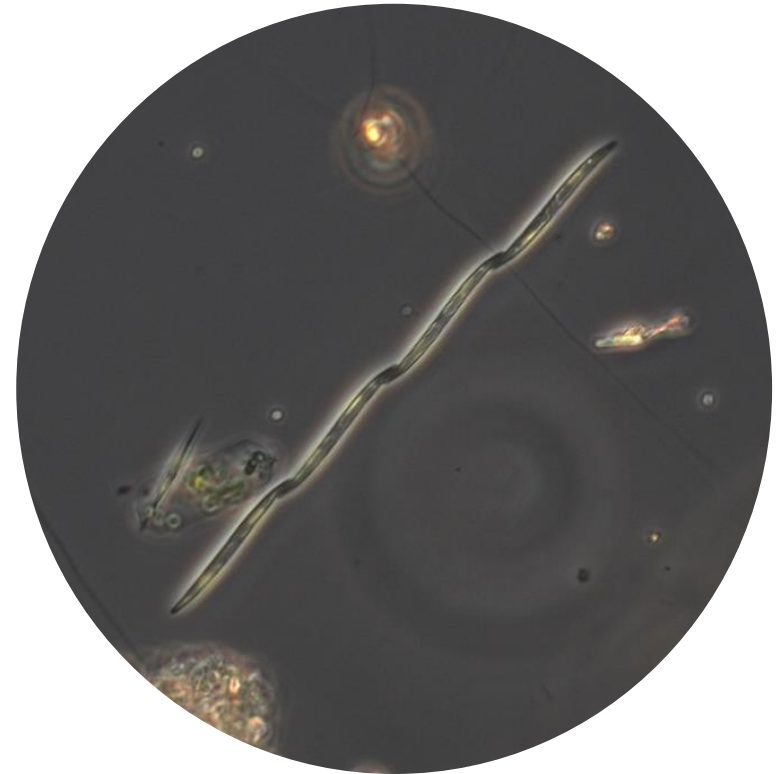
Skeletonema menzelii (6.0%)

Most abundant species in the net sample:

Chaetoceros socialis

Thalassiosira rotula

NOTES:



Live sample

Main species in the picture: *Pseudo-nitzschia multistriata*