

MC 1072

18/09/2013

Phytoplankton abundance:

$7,8 \times 10^3$ cells ml⁻¹

Phytoplankton groups percentage:

flagellates: 60%, diatoms: 39%,
coccolithophores: 0,7%, dinoflagellates: 0,3%

Most abundant diatoms:

Leptocylindrus danicus (10,6%)

Chaetoceros curvisetus (5,9%)

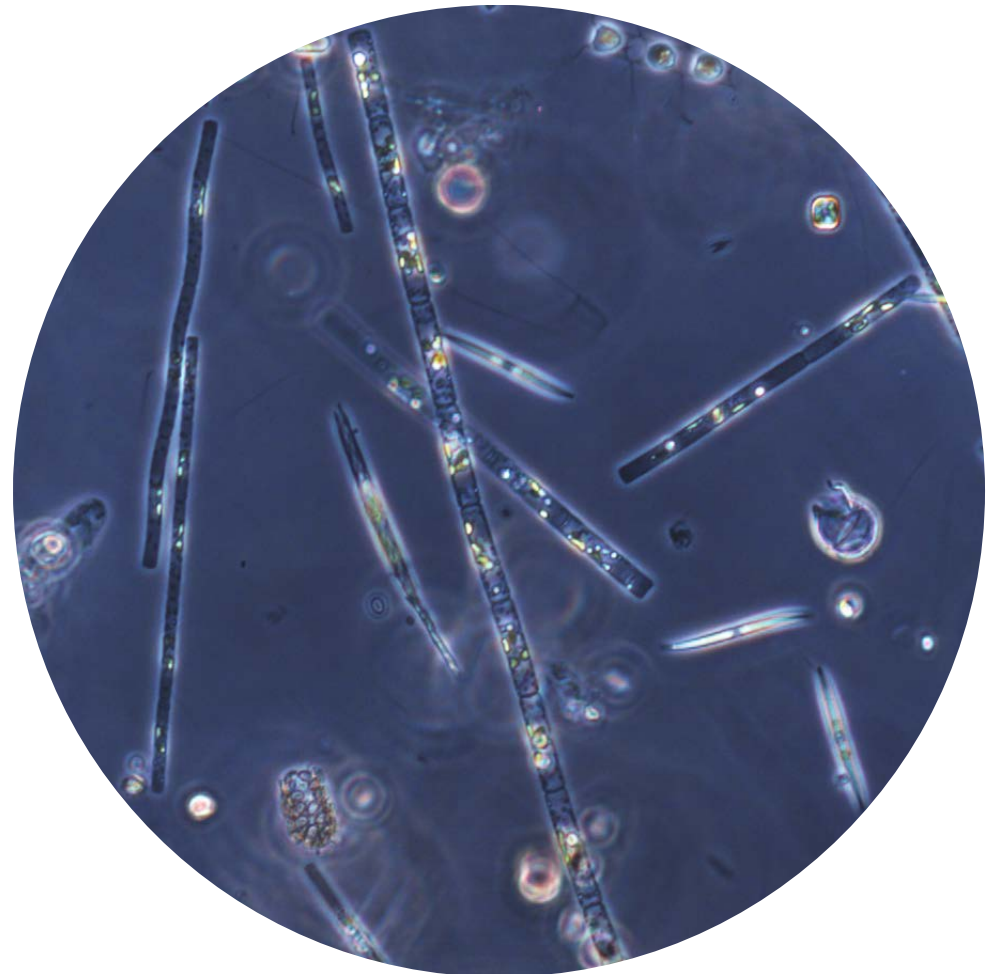
Most abundant species in net sample:

Leptocylindrus danicus

Thalassionema nitzschioides

Chaetoceros curvisetus

Notes: preliminary quantitative analysis



Live sample