

## MC 1072

18/09/2013

### Meso-zooplankton abundance:

1117 ind. m<sup>-3</sup>

### Long-term average (September, 1984-2011):

2170 ± 925 ind. m<sup>-3</sup>

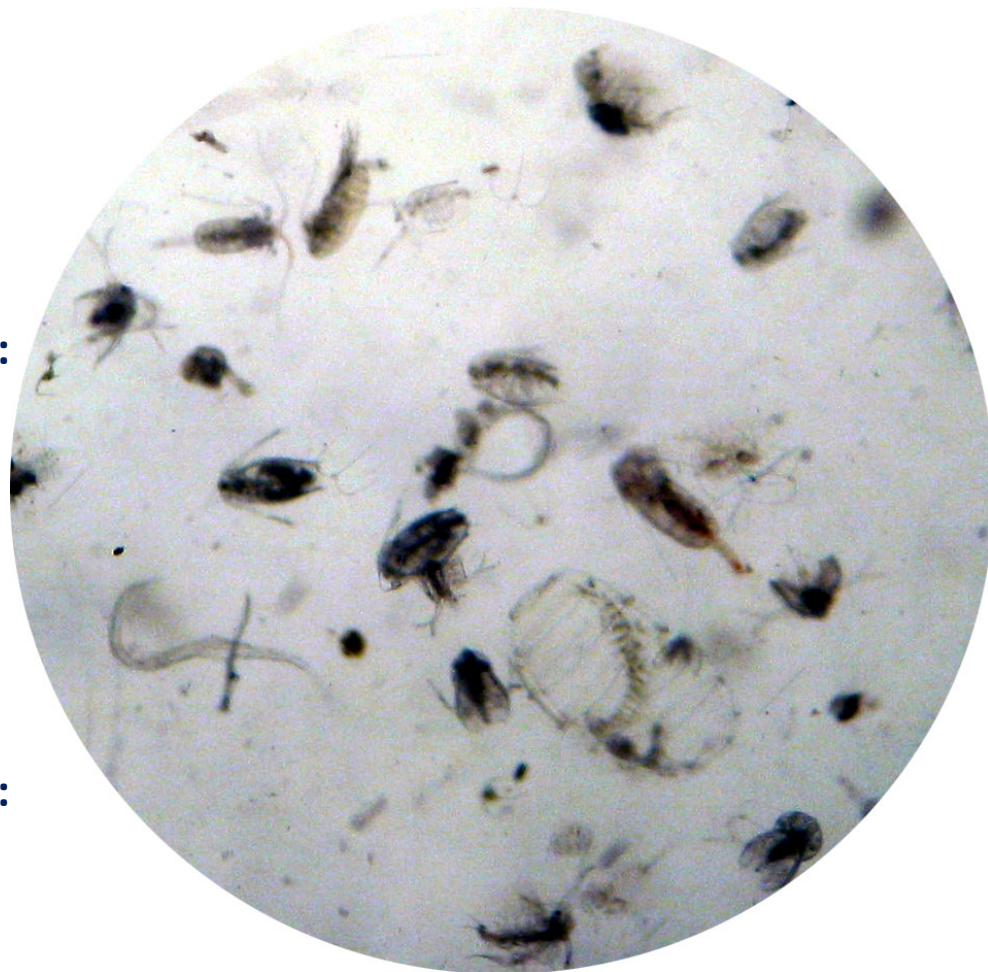
### Most abundant taxa: cladoceran

*Penilia avirostris*

Dry mass: 5.5 mg m<sup>-3</sup> (10/09/13, MC 1071)

### Long-term average (September, 1984-2012):

10.4 ± 4.9 mg m<sup>-3</sup>



Today's alive sample