

MC 1073

24/09/2013

Phytoplankton abundance:

$1,7 \times 10^3$ cells ml⁻¹

Phytoplankton groups percentage:

diatoms: 62,5%, flagellates: 39%,
dinoflagellates: 2%, coccolithophores: 1%

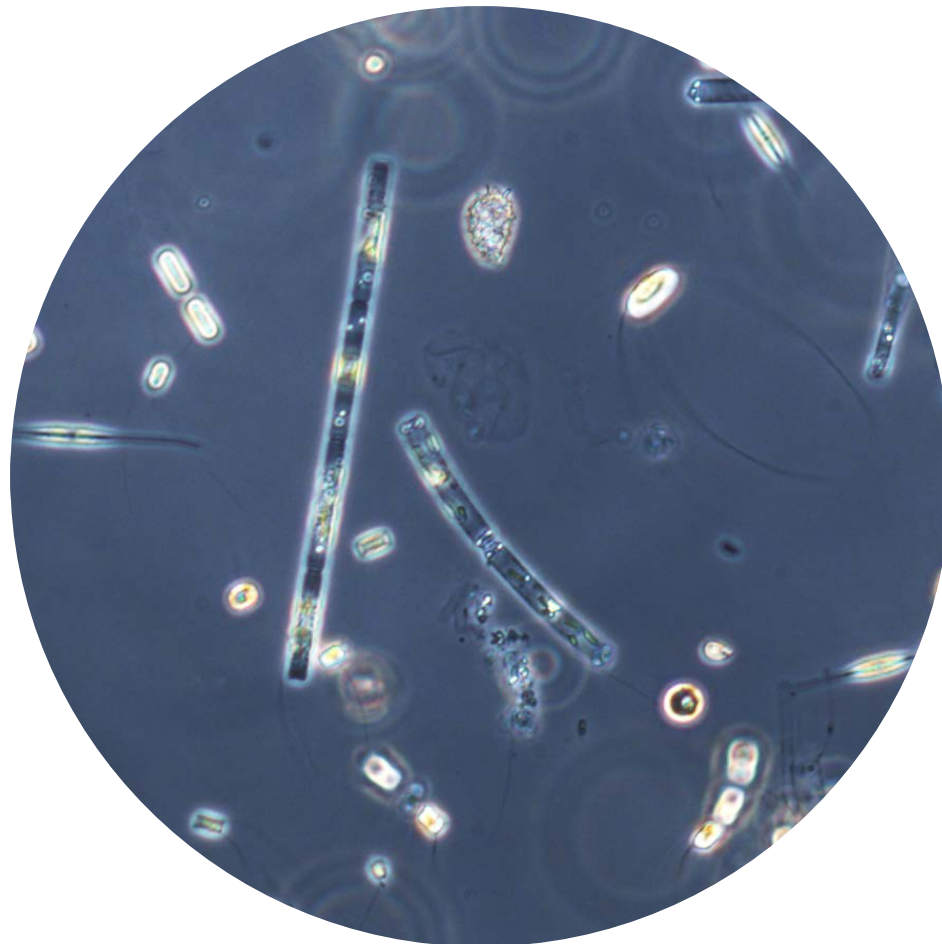
Most abundant diatoms:

Chaetoceros socialis (17,8%)
Thalassiosira cf. *allenii* (8,1%)
Leptocylindrus danicus (7,5%)

Most abundant species in net sample:

Leptocylindrus danicus
Thalassionema nitzschioides
Chaetoceros curvisetus

Notes: preliminary quantitative analysis



Live sample