

MC 1075

08/10/2013

Phytoplankton abundance:

$8,8 \times 10^3$ cells ml⁻¹

Phytoplankton groups percentage:

flagellates: 48%, diatoms: 43%,

coccolithophores: 5%, dinoflagellates: 4%

Most abundant diatom species:

Skeletonema menzelii (14,9%)

Chaetoceros tenuissimus (6,8%)

Pseudo-nitzschia multistriata (4,9%)

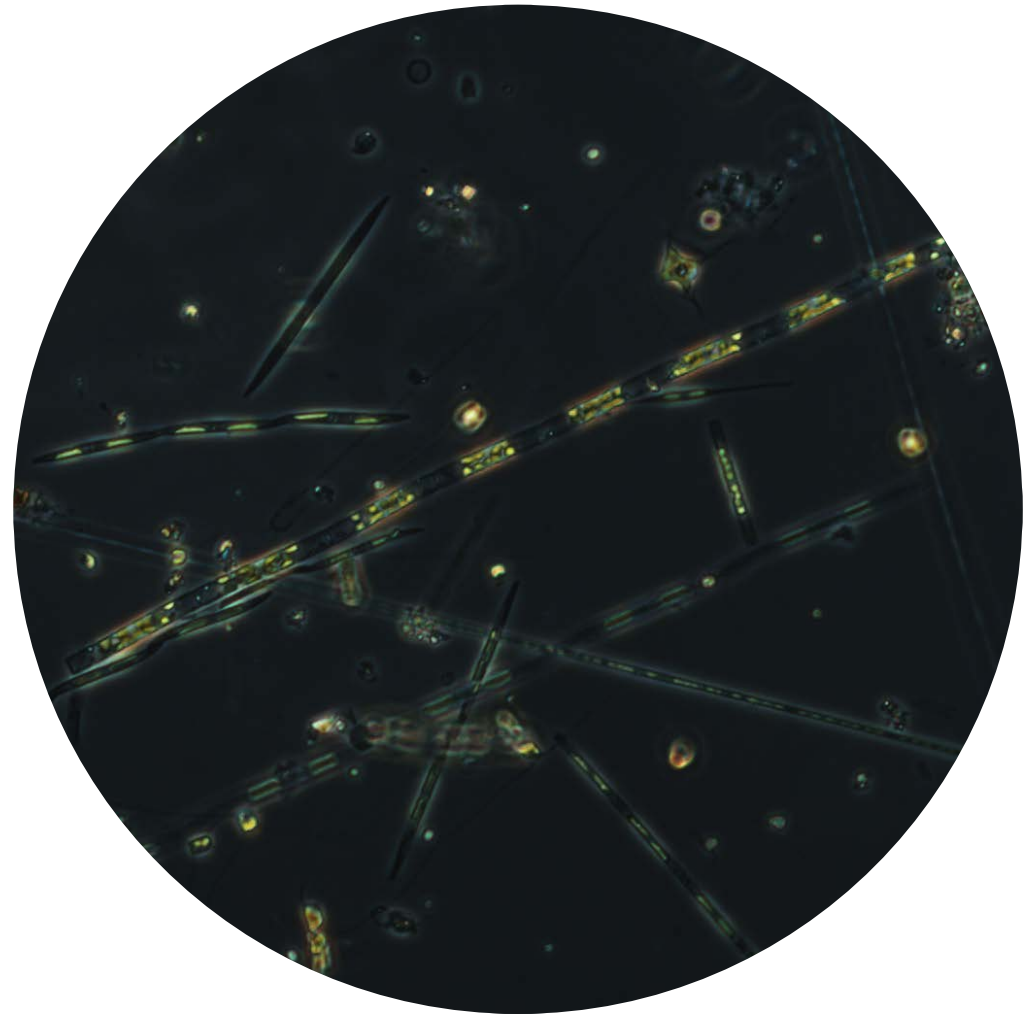
Most abundant species in net sample:

Pseudo-nitzschia pseudodelicatissima

Pseudo-nitzschia multistriata

Lauderia annulata

Notes: preliminary quantitative analysis



Live sample