

## MC 1076

15/10/2013

### Phytoplankton abundance:

$7,3 \times 10^3$  cells ml<sup>-1</sup>

### Phytoplankton groups percentage:

flagellates: 42%, diatoms: 20%,  
coccolithophores: 36%, dinoflagellates: 2%

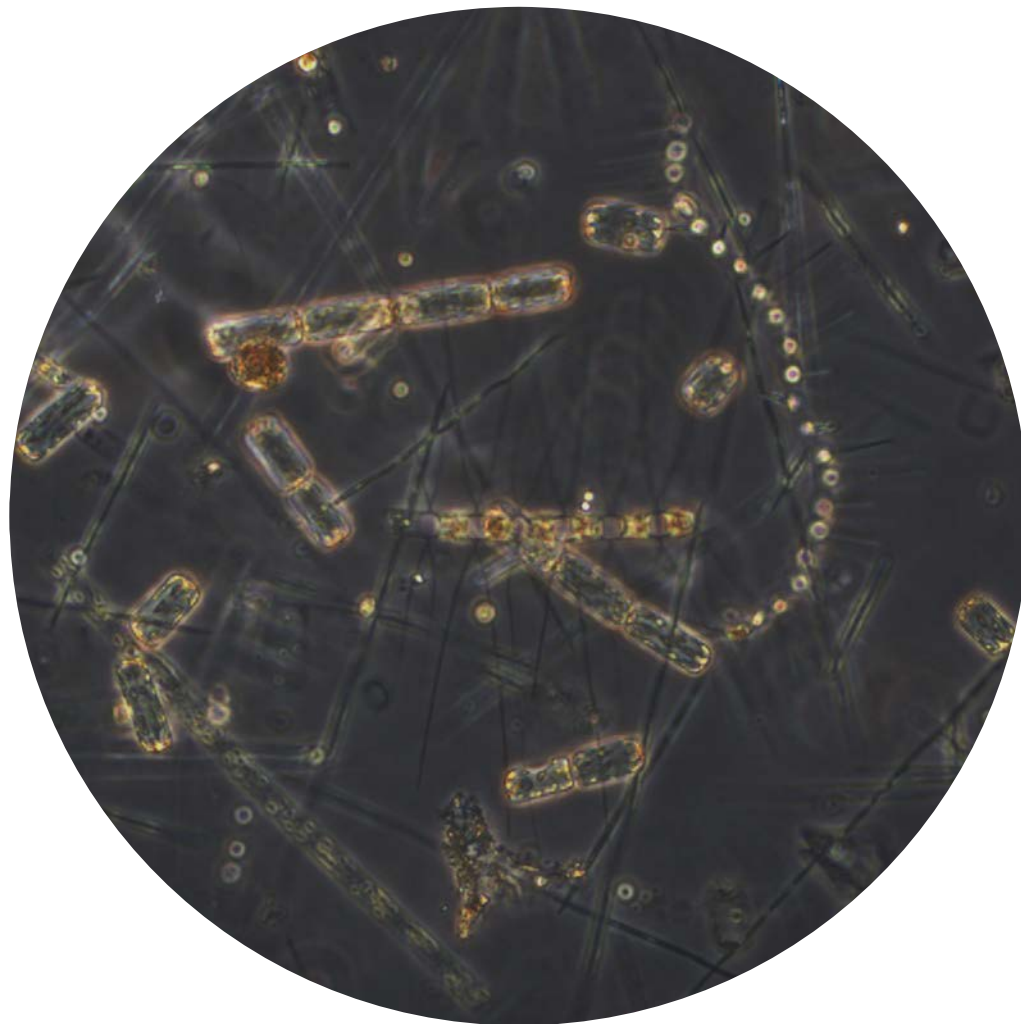
### Most abundant taxa:

*Emiliana huxleyi* (35,2%)  
*Skeletonema menzeli* (5,5%)  
*Tenuicylindrus minimus* (3,8%)

### Most abundant species in net sample:

*Pseudo-nitzschia pseudodelicatissima*  
*Tenuicylindrus minimus*  
*Lauderia annulata*

Notes: preliminary quantitative analysis



Live sample