

MC 1077

22/10/2013

Phytoplankton abundance:

2×10^3 cells ml⁻¹

Phytoplankton groups percentage:

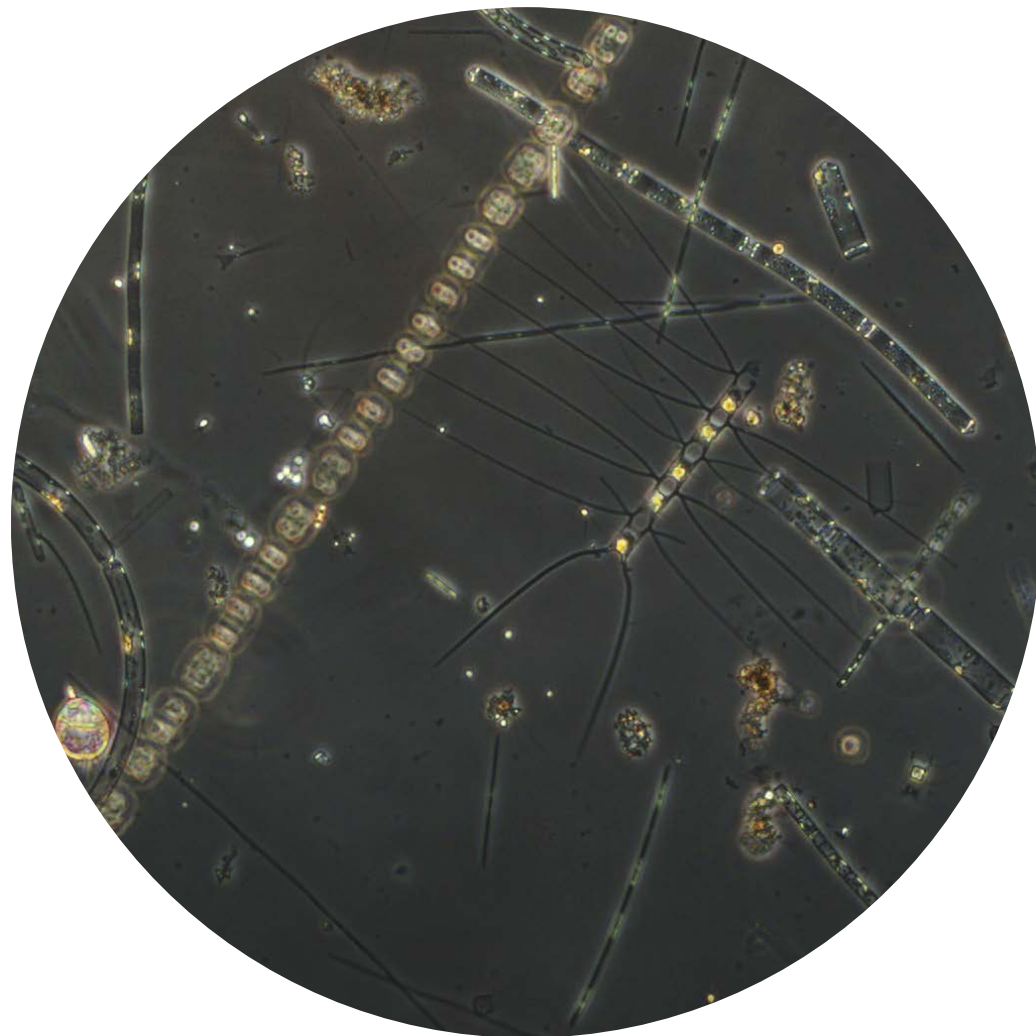
flagellates: 67%, diatoms: 13%,
coccolithophores: 17%, dinoflagellates: 3%

Most abundant taxa:

Emiliana huxleyi (15,2%)
Leptocylindrus danicus (2,0%)

Most abundant species in net sample:

Chaetoceros decipiens
Pseudo-nitzschia pseudodelicatissima
Skeletonema tropicum



Live sample

Notes: preliminary quantitative analysis