

## MC 1078

28/10/2013

### Meso-zooplankton abundance:

579 ind. m<sup>-3</sup>

### Long-term average (October, 1984-2011):

1511 ± 634 ind. m<sup>-3</sup>

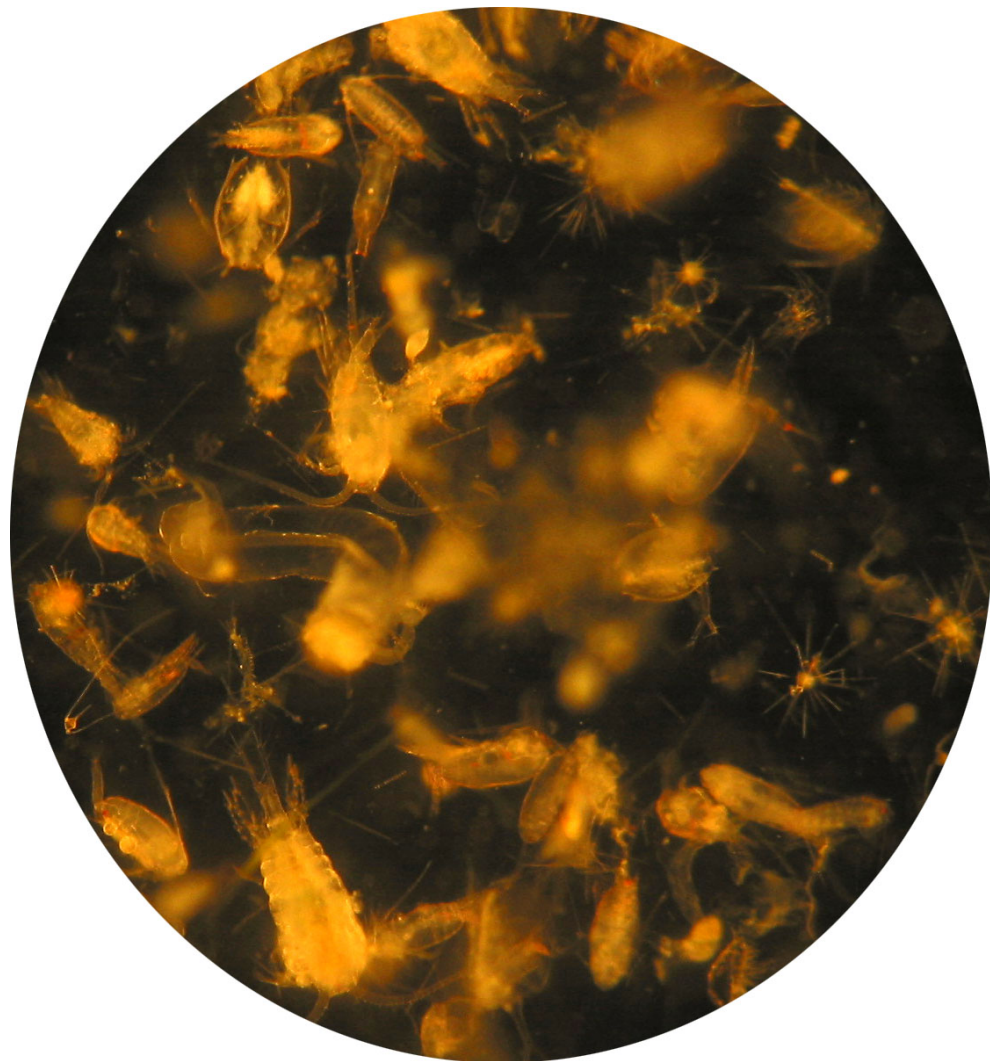
### Most abundant taxa: copepod

*Temora stylifera*

**Dry mass:** 5 mg m<sup>-3</sup> (22/10/13, MC 1077)

### Long-term average (October, 1984-2012):

9.5 ± 4.6 mg m<sup>-3</sup>



Today's alive sample