

## MC 1081

21/11/2013

### Phytoplankton abundance:

$2,5 \times 10^3$  cells ml<sup>-1</sup>

### Phytoplankton groups percentage:

flagellates: 70%, diatoms: 24%,  
coccolithophores: 4,0%, dinoflagellates: 2,0%

### Most abundant diatom species:

*Skeletonema menzelii* (7,5%)

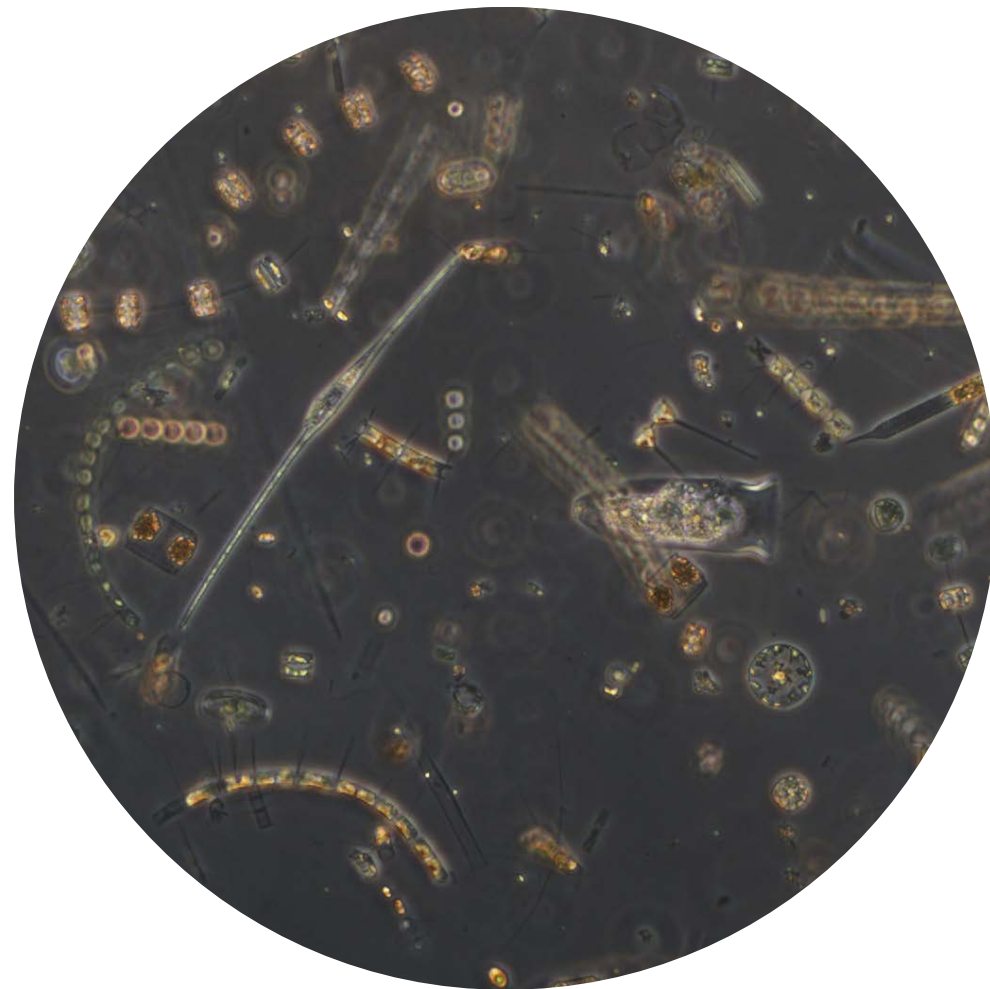
*Chaetoceros socialis* (6,2%)

### Most abundant species in net sample:

*Chaetoceros costatus*

*Skeletonema tropicum*

*Thalassiosira rotula*



Live sample