

## MC 1081

21/11/2013

**Meso-zooplankton abundance:**

605 ind. m<sup>-3</sup>

**Long-term average (November, 1984-2012):**

873 ± 273 ind. m<sup>-3</sup>

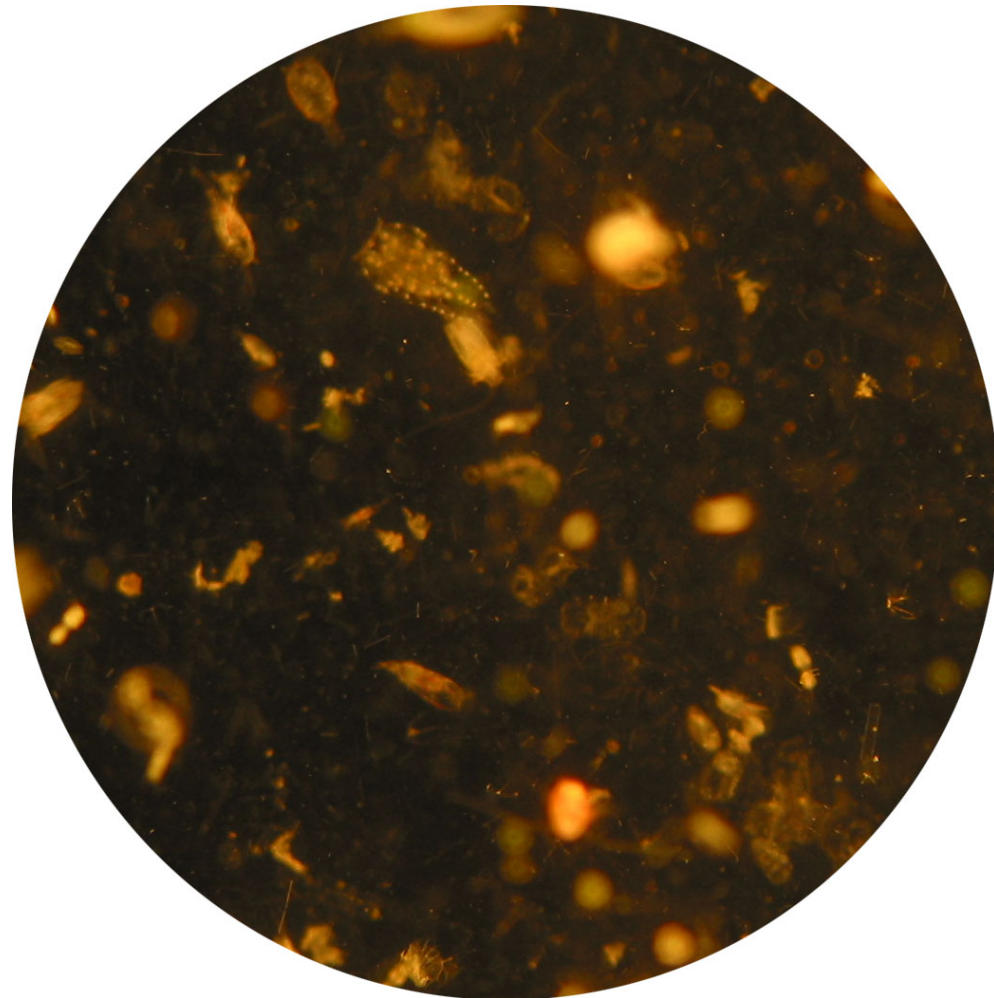
**Most abundant taxa:** copepod

**Dry mass:** 6.1 mg m<sup>-3</sup> (13/11/13, MC 1080)

**Long-term average (November, 1984-2012):**

8.5 ± 3.2 mg m<sup>-3</sup>

**Note:** *Sagitta enflata* with ciliates



Today's alive sample