

## MC 1082

26/11/2013

### Phytoplankton abundance:

$8,4 \times 10^2$  cells ml<sup>-1</sup>

### Phytoplankton groups percentage:

flagellates: 50,3%, diatoms: 42,5%,  
coccolithophores: 4,7%, dinoflagellates: 2,5%

### Most abundant diatom species:

*Chaetoceros socialis* (18,9%)

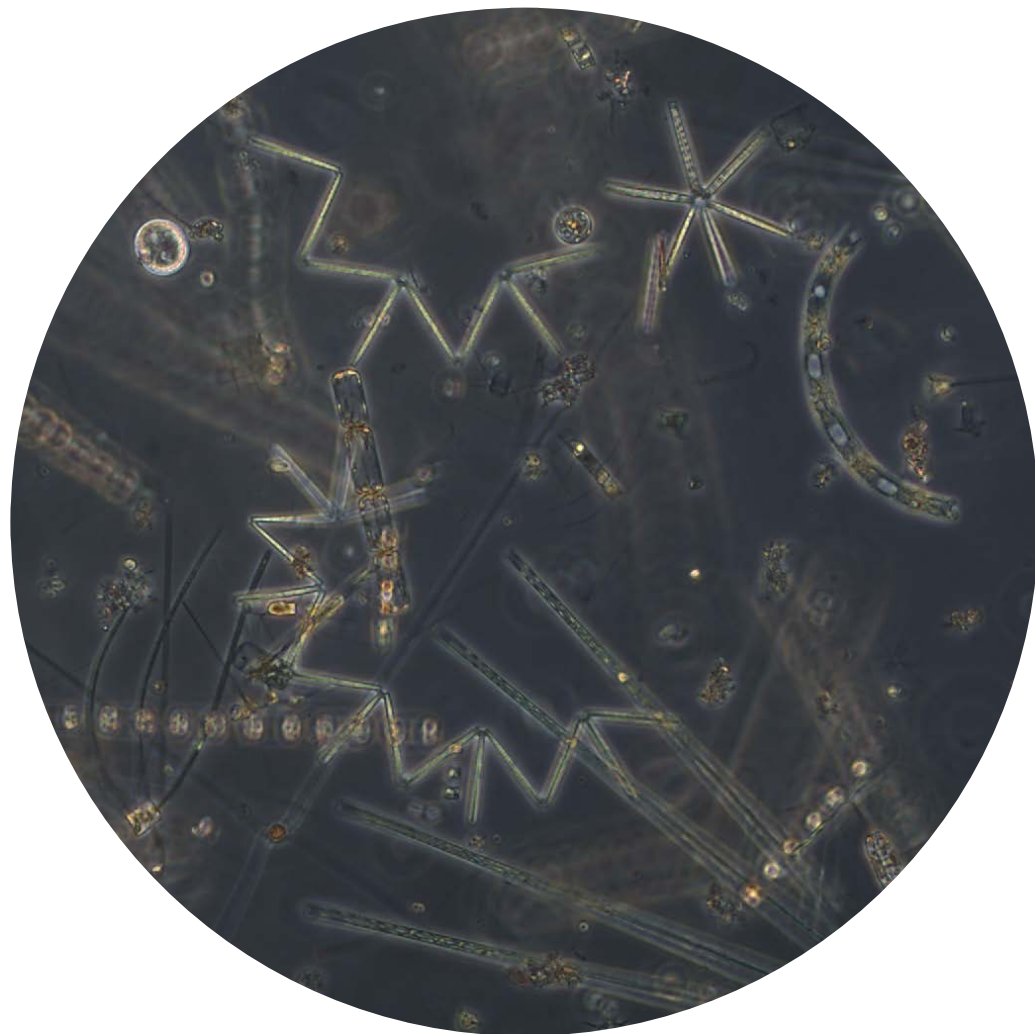
*Chaetoceros costatus* (8,5%)

### Most abundant species in net sample:

*Chaetoceros costatus*

*Chaetoceros socialis*

*Lauderia annulata*



Live sample

Notes: preliminary quantitative analysis