

MC 1082

26/11/2013

Phytoplankton abundance:

$8,4 \times 10^3$ cells ml⁻¹

Phytoplankton groups percentage:

flagellates: 50,3%, diatoms: 42,5%,
coccolithophores: 4,7%, dinoflagellates: 2,5%

Most abundant diatom species:

Chaetoceros socialis (18,9%)

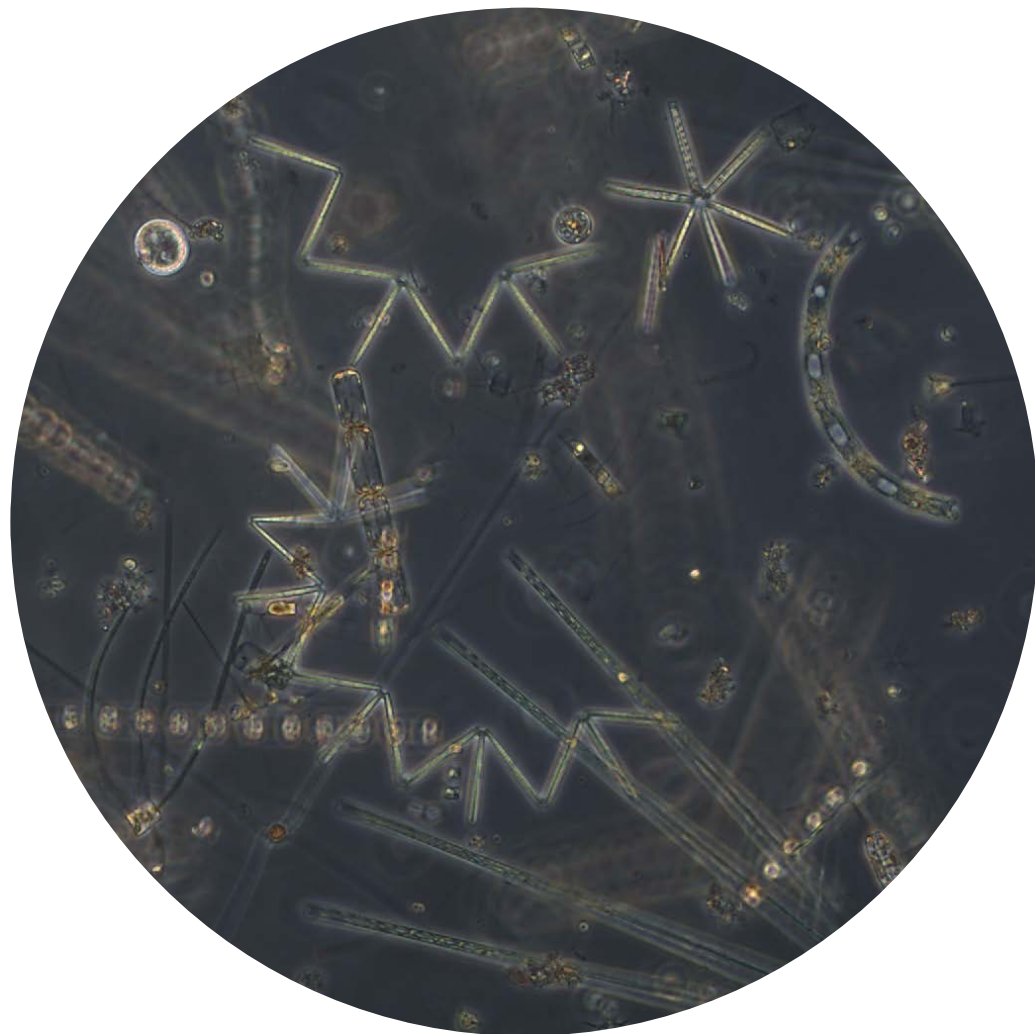
Chaetoceros costatus (8,5%)

Most abundant species in net sample:

Chaetoceros costatus

Chaetoceros socialis

Lauderia annulata



Live sample

Notes: preliminary quantitative analysis