

MC 1082

26/11/2013

Meso-zooplankton abundance:

633 ind. m⁻³

Long-term average (November, 1984-2012):

873 ± 273 ind. m⁻³

Most abundant taxa: thaliacean

Doliolum nationalis

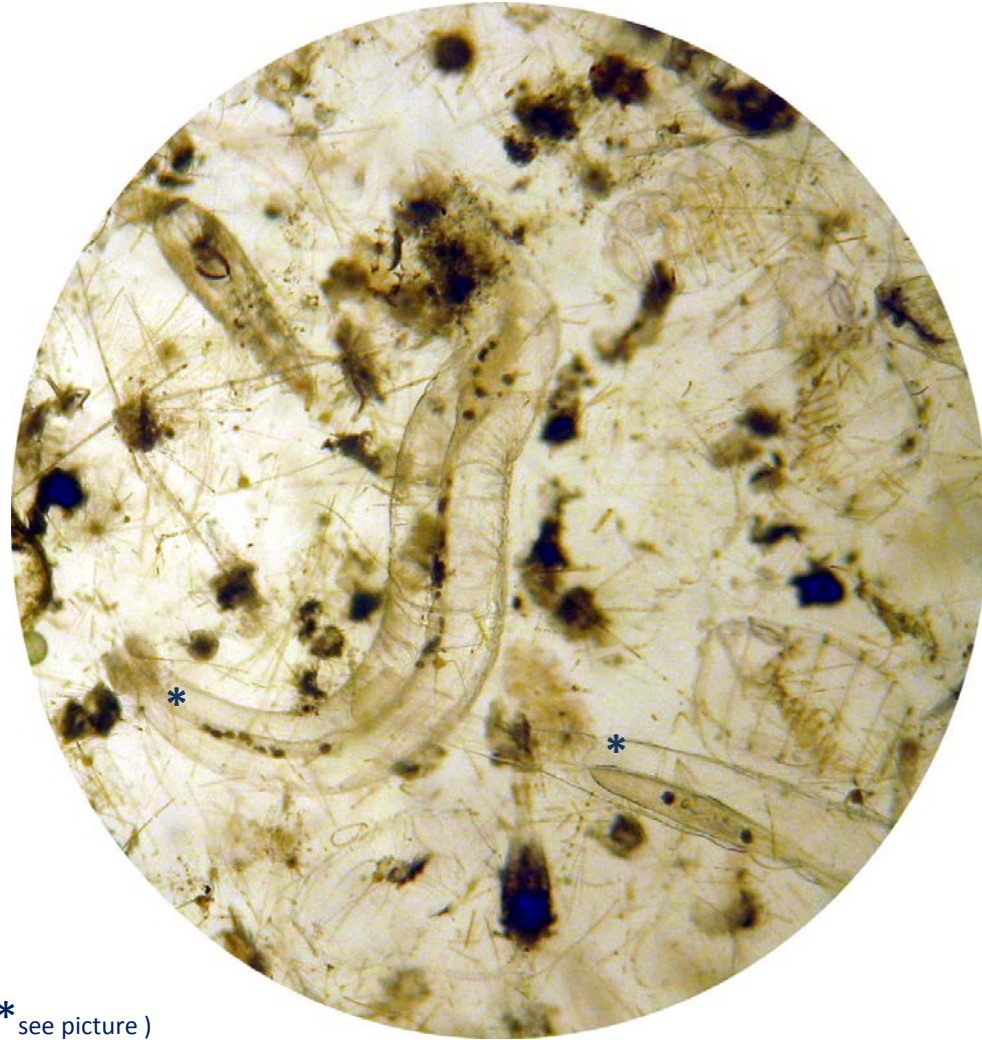
and cladoceran *Penilia avirostris*

Dry mass: 7.9 mg m⁻³ (21/11/13, MC 1081)

Long-term average (November, 1984-2012):

8.5 ± 3.2 mg m⁻³

Note: Acantharians and *Sagitta* with ciliates (* see picture)



Today's alive sample