

MC 1083

04/12/2013

Meso-zooplankton abundance:

232 ind. m⁻³

Long-term average (Dicember, 1984-2012):

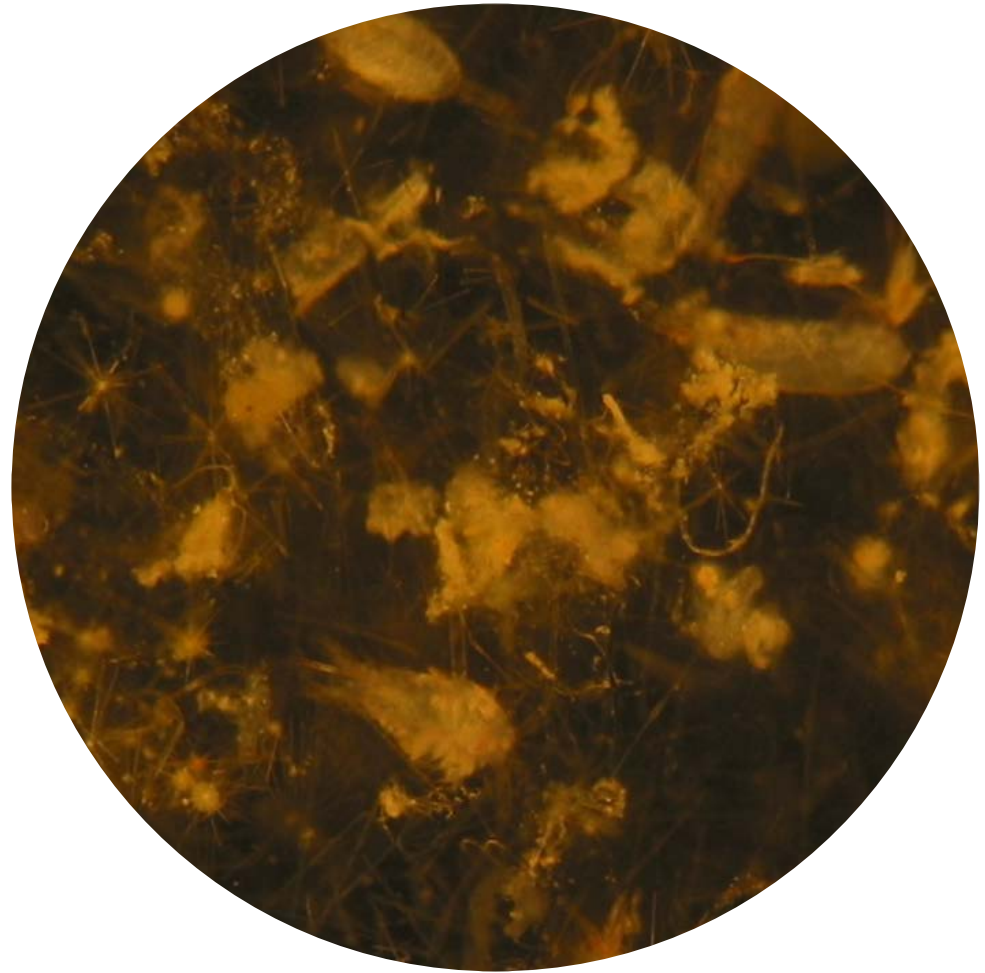
557 ± 212 ind. m⁻³

Most abundant taxa: copepod *Oithona* spp.
and cirriped larvae

Dry mass: 9.6 mg m⁻³ (21/11/13, MC 1081)

Long-term average (November, 1984-2012):

8.5 ± 3.2 mg m⁻³



Today's alive sample