

MC 1084

10/12/2013

Meso-zooplankton abundance:

178 ind. m⁻³

Long-term average (December, 1984-2012):

557 ± 212 ind. m⁻³

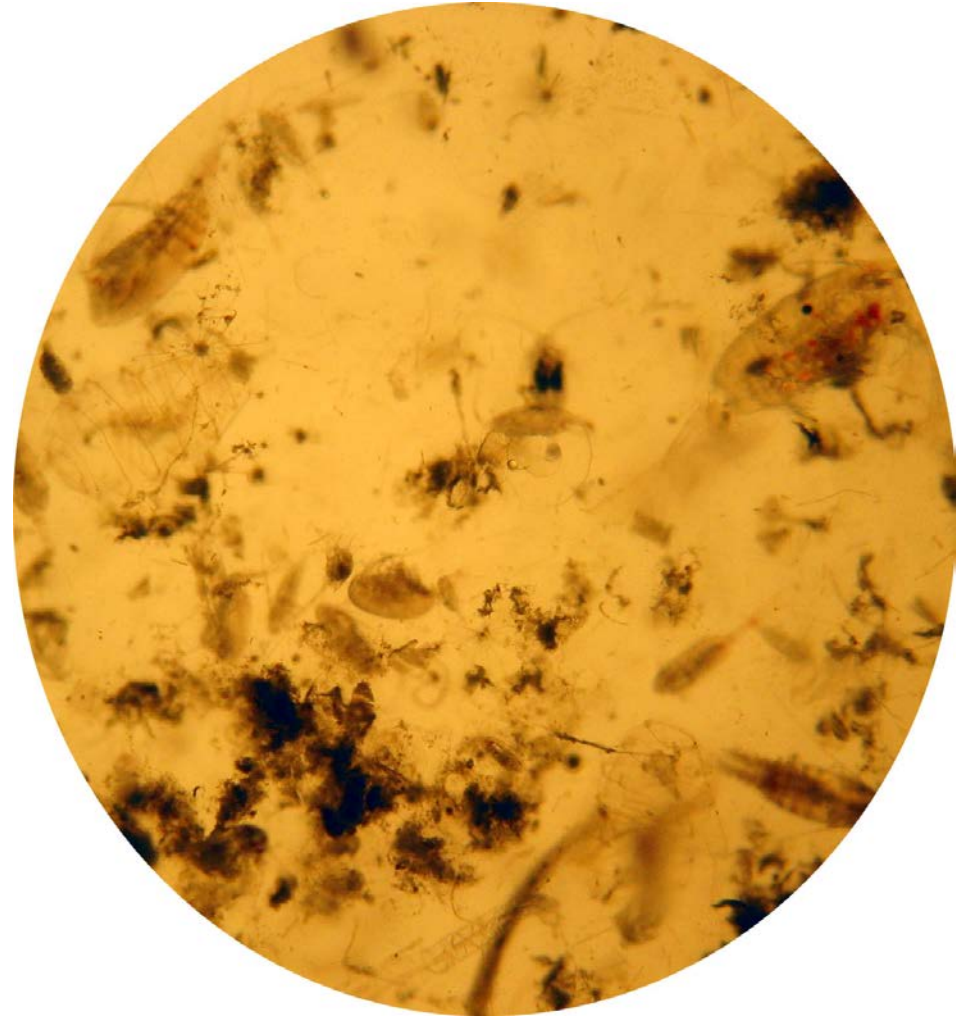
Most abundant taxa: copepods

Clausocalanus spp. and *Oithona plumifera*

Dry mass: 4.7 mg m⁻³ (04/12/13, MC 1083)

Long-term average (December, 1984-2012):

5.3 ± 2.4 mg m⁻³



Today's alive sample