

## MC 1085

17/12/2013

### Phytoplankton abundance:

$7.9 \times 10^2$  cells ml<sup>-1</sup>

### Phytoplankton groups percentage:

diatoms: 56%, flagellates: 36%,  
coccolithophores: 5%, dinoflagellates: 3%

### Most abundant diatom species:

*Chaetoceros socialis* (43.7%)

*Leptocylindrus danicus* (4.5%)

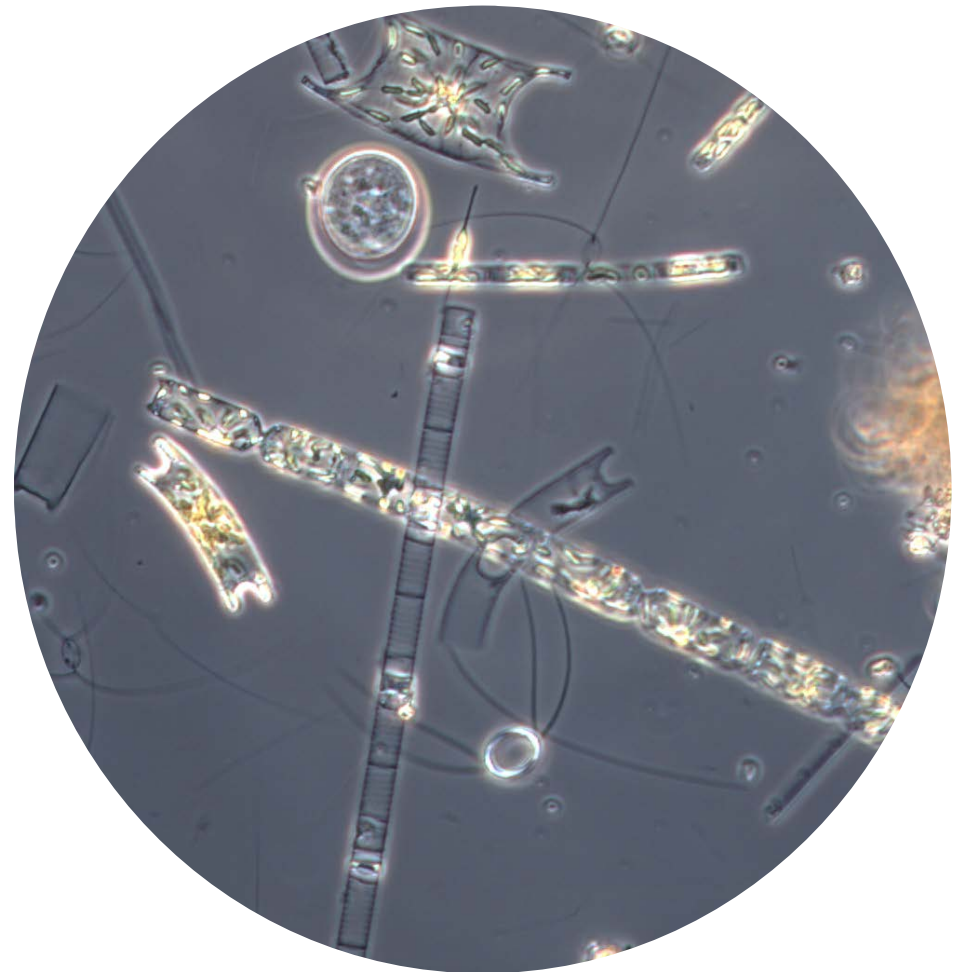
*Pseudo-nitzschia pseudodelicatissima* (3.5%)

### Most abundant species in net sample:

*Chaetoceros socialis*

*Chaetoceros costatus*

Notes: preliminary quantitative analysis



Live sample