

MC 1085

17/12/2013

Meso-zooplankton abundance:

113 ind. m⁻³

Long-term average (December, 1984-2012):

557 ± 212 ind. m⁻³

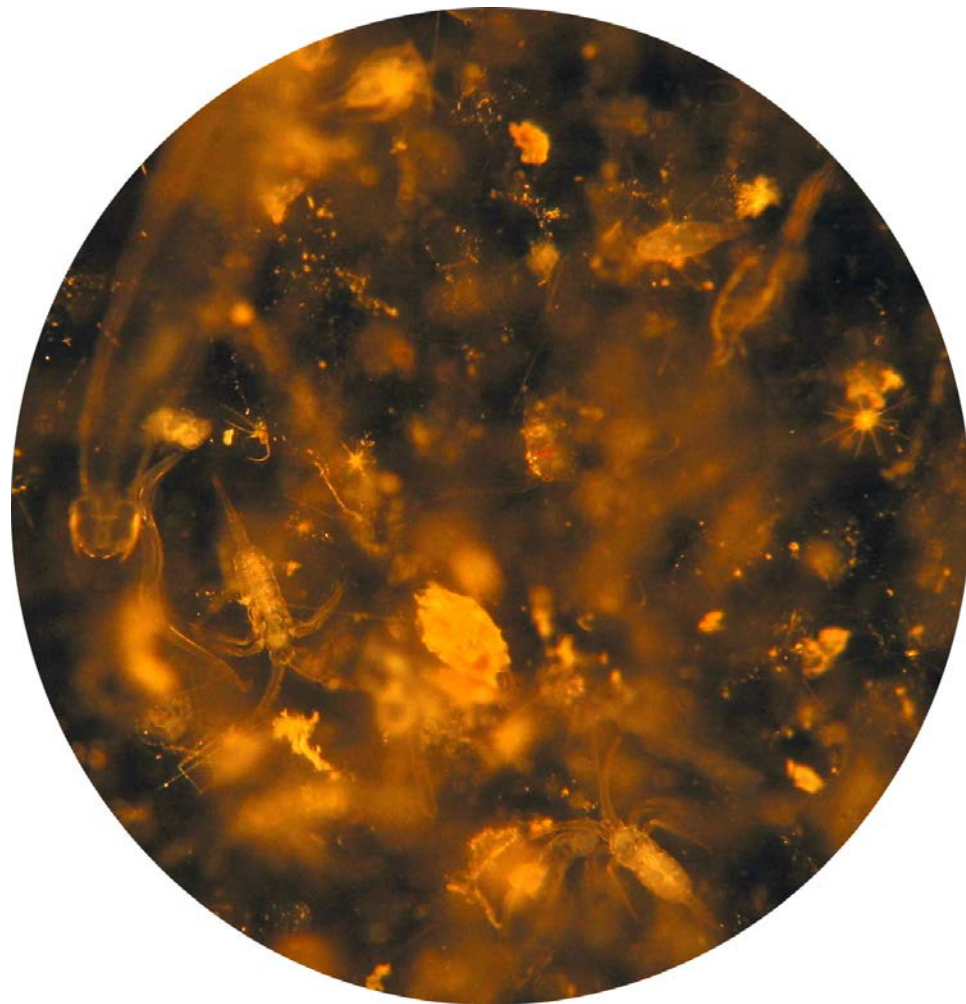
Most abundant taxa: copepods

Clausocalanus spp. and *Oithona plumifera*

Dry mass: 4.1 mg m⁻³ (10/12/13, MC 1084)

Long-term average (December, 1984-2012):

5.3 ± 2.4 mg m⁻³



Today's alive sample