

MC 1088

07/01/2014

Phytoplankton abundance:

$5,6 \times 10^2$ cells ml⁻¹

Phytoplankton groups percentage:

flagellates: 82%, diatoms: 10%,
coccolithophores: 4,0%, dinoflagellates: 4,0%

Most abundant phytoplankton taxa:

Chaetoceros socialis (2,6%)

Emiliana huxleyi (3,3%)

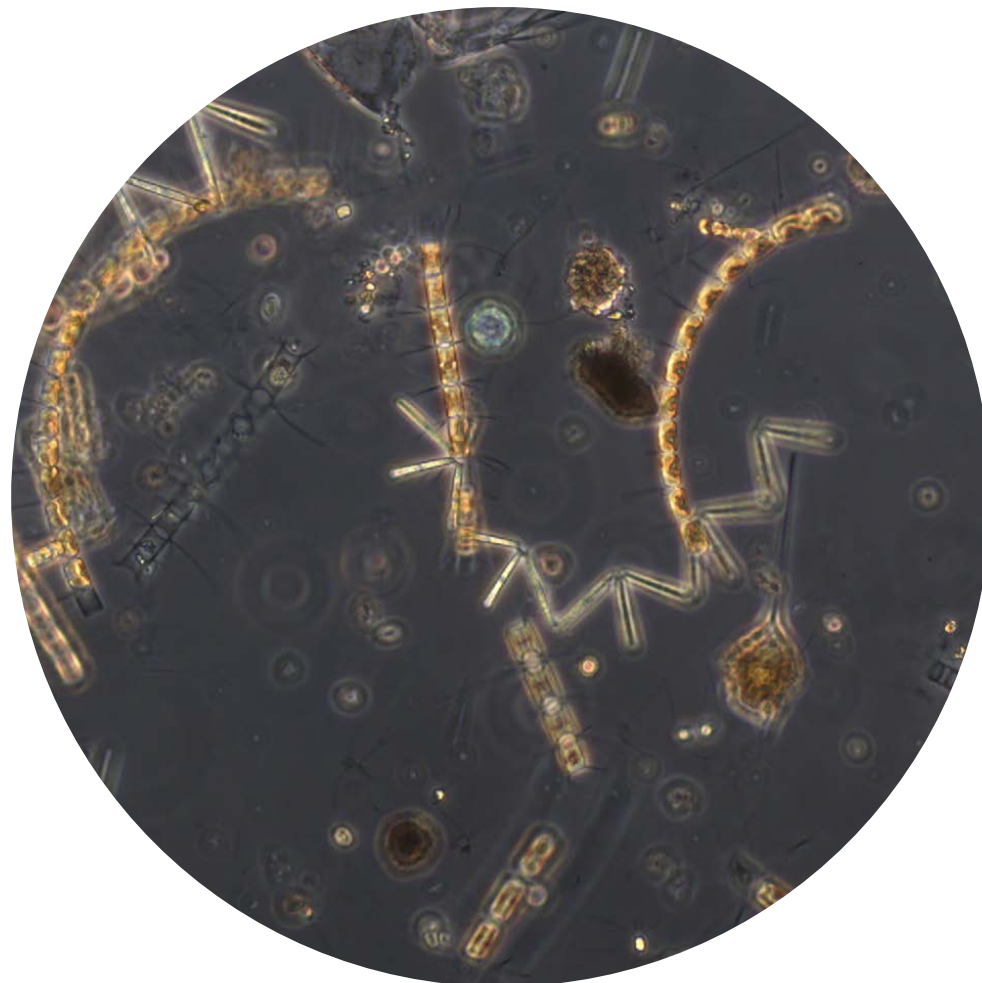
Most abundant species in net sample:

Chaetoceros curvisetus

Chaetoceros pseudocurvisetus

Chaetoceros protuberans

Notes: preliminary quantitative analysis



Live sample