

MC 1088

07/01/2014

Meso-zooplankton abundance:

926 ind. m⁻³

Long-term average (January 1984-2013):

576 ± 212 ind. m⁻³

Most abundant taxa: copepod

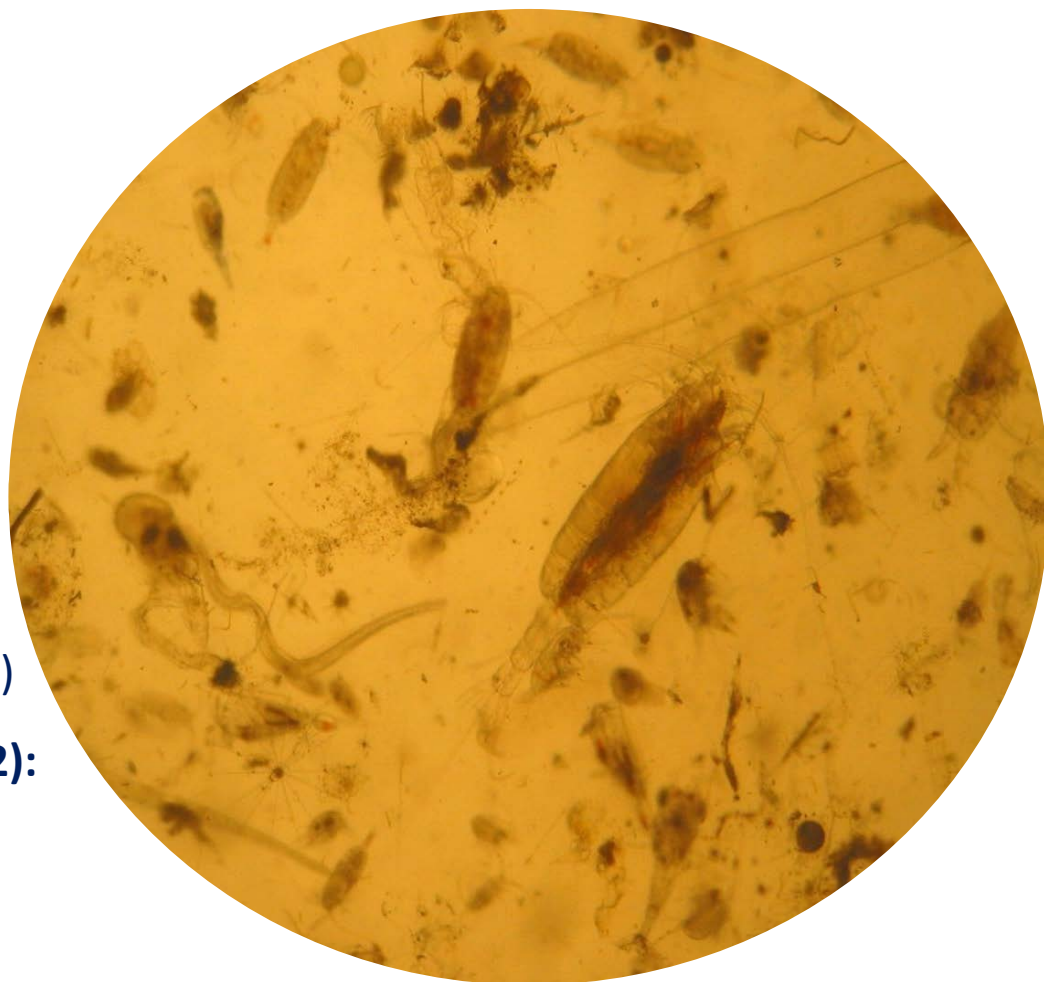
Clausocalanus spp.

Dry mass: 5.7 mg m⁻³ (30/12/13, MC 1087)

Long-term average (December, 1984-2012):

5.3 ± 2.4 mg m⁻³

Note: *Sagitta* with ciliates



Today's alive sample