

MC 1089

13/01/2014

Phytoplankton abundance:

$1,2 \times 10^3$ cells ml⁻¹

Phytoplankton groups percentage:

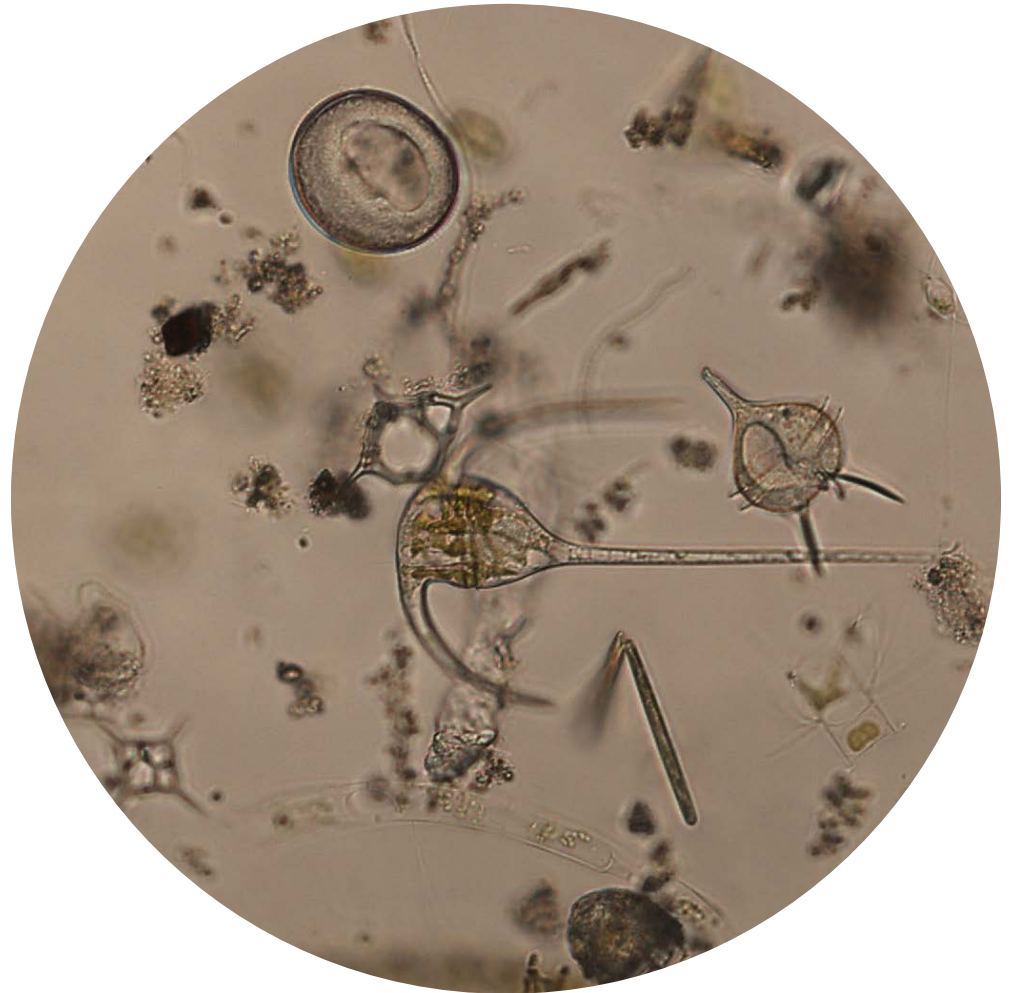
flagellates: 68,7%, diatoms: 19%,
coccolithophores: 7,7%, dinoflagellates: 4,6%

Most abundant diatom species:

Skeletonema menzelii (10,1%)
Cylindrotheca closterium (3,1%)

Most abundant species in net sample:

Chaetoceros pseudocurvisetus
Chaetoceros curvisetus
Calciosolenia brasiliensis



Live sample

Notes: preliminary quantitative analysis