

MC 1090

23/01/2014

Meso-zooplankton abundance:

265 ind. m⁻³

Long-term average (January 1984-2013):

576 ± 212 ind. m⁻³

Most abundant taxa : copepods

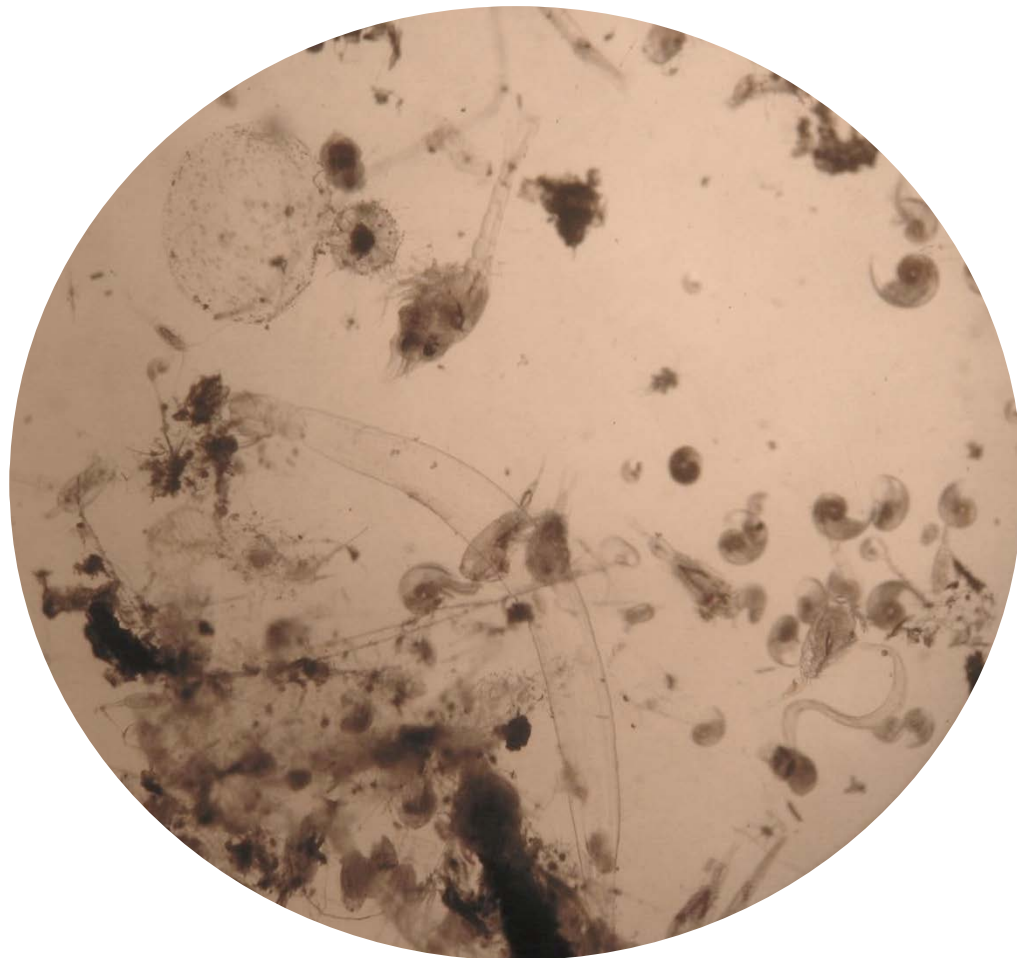
Corycaeus spp. 14%, *Temora stylifera* 13%,
Clausocalanus spp. 11%, cirriped nauplii
10% and gastropod veligers 5%

Dry mass: 3.9 mg m⁻³ (13/01/14, MC 1089)

Long-term average (January, 1984-2013):

4.1 ± 1.2 mg m⁻³

Note: many pieces of plastic



Today's alive sample