

MC 1090

23/01/2014

Phytoplankton abundance:

$6,6 \times 10^2$ cells ml⁻¹

Phytoplankton groups percentage:

flagellates: 80,4%, diatoms: 7,2%,
coccolithophores: 7,2%, dinoflagellates: 5,2%

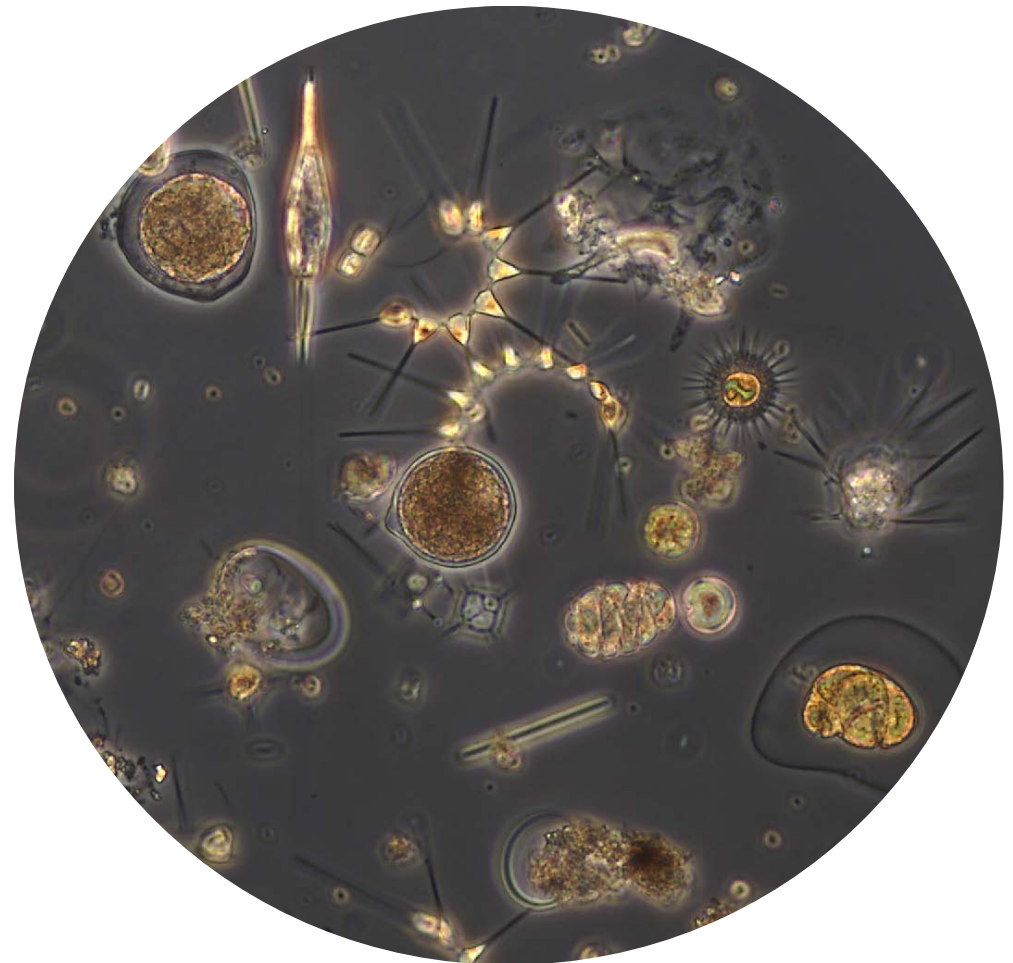
Most abundant phytoplankton taxa:

Emiliana huxleyi (6,8%)
Skeletonema menzelii (4,4%)

Most abundant species in net sample:

Tripus fusus
Calciosolenia brasiliensis
Dictyocha fibula

Notes: preliminary quantitative analysis;
Several copepod eggs present in the net sample



Live sample