

MC 1093

13/02/2014

Phytoplankton abundance:

1.1×10^3 cells ml⁻¹

Phytoplankton groups percentage:

diatoms: 58%, flagellates: 33%,
coccolithophores: 3.5%, dinoflagellates: 4.6%

Most abundant diatom species:

Asterionellopsis glacialis (12%)

Thalassiosira mediterranea (6.2%)

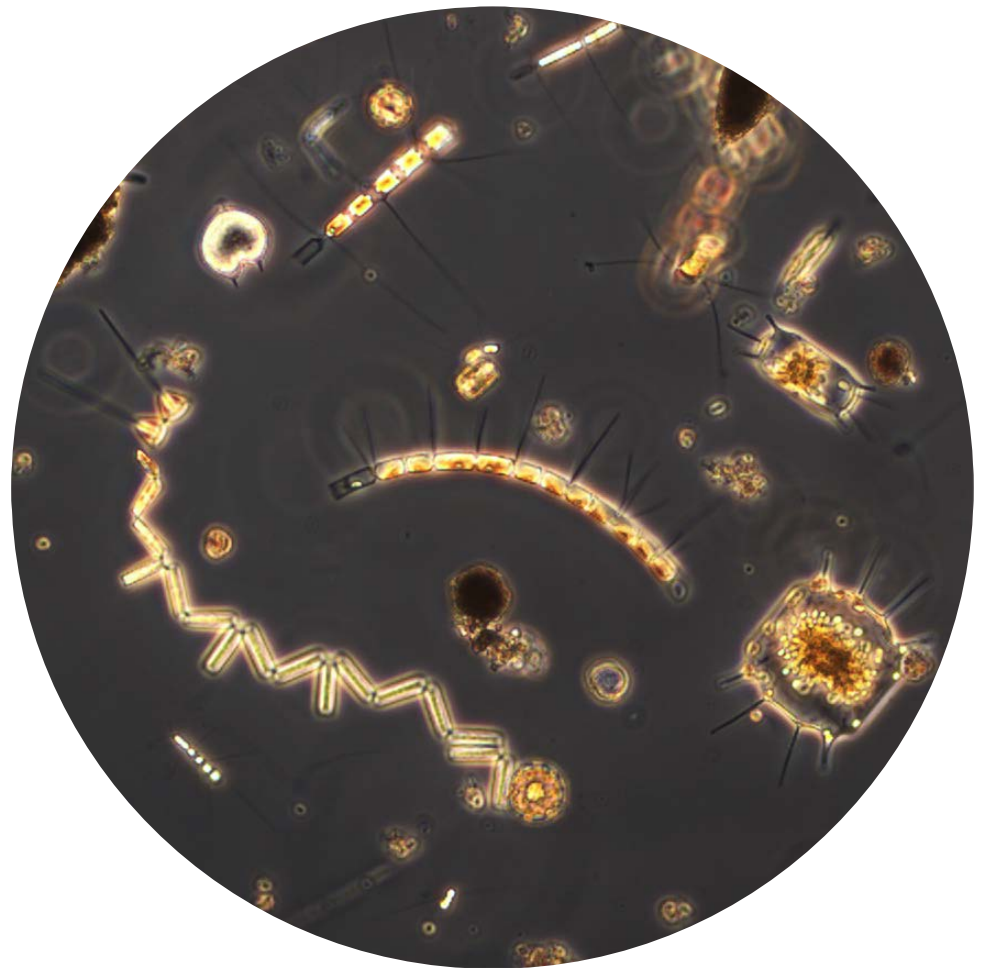
Most abundant species in the net sample:

Chaetoceros pseudocurvisetus

Chaetoceros spp.

Notes: preliminary quantitative analysis;

Very diversified net sample without dominant taxa



Live sample