

## MC 1094

18/02/2014

### Phytoplankton abundance:

$1.0 \times 10^4$  cells ml<sup>-1</sup>

### Phytoplankton groups percentage:

diatoms: 63%, flagellates: 36%,  
dinoflagellates: 0.7%, coccolithophores: 0.6%

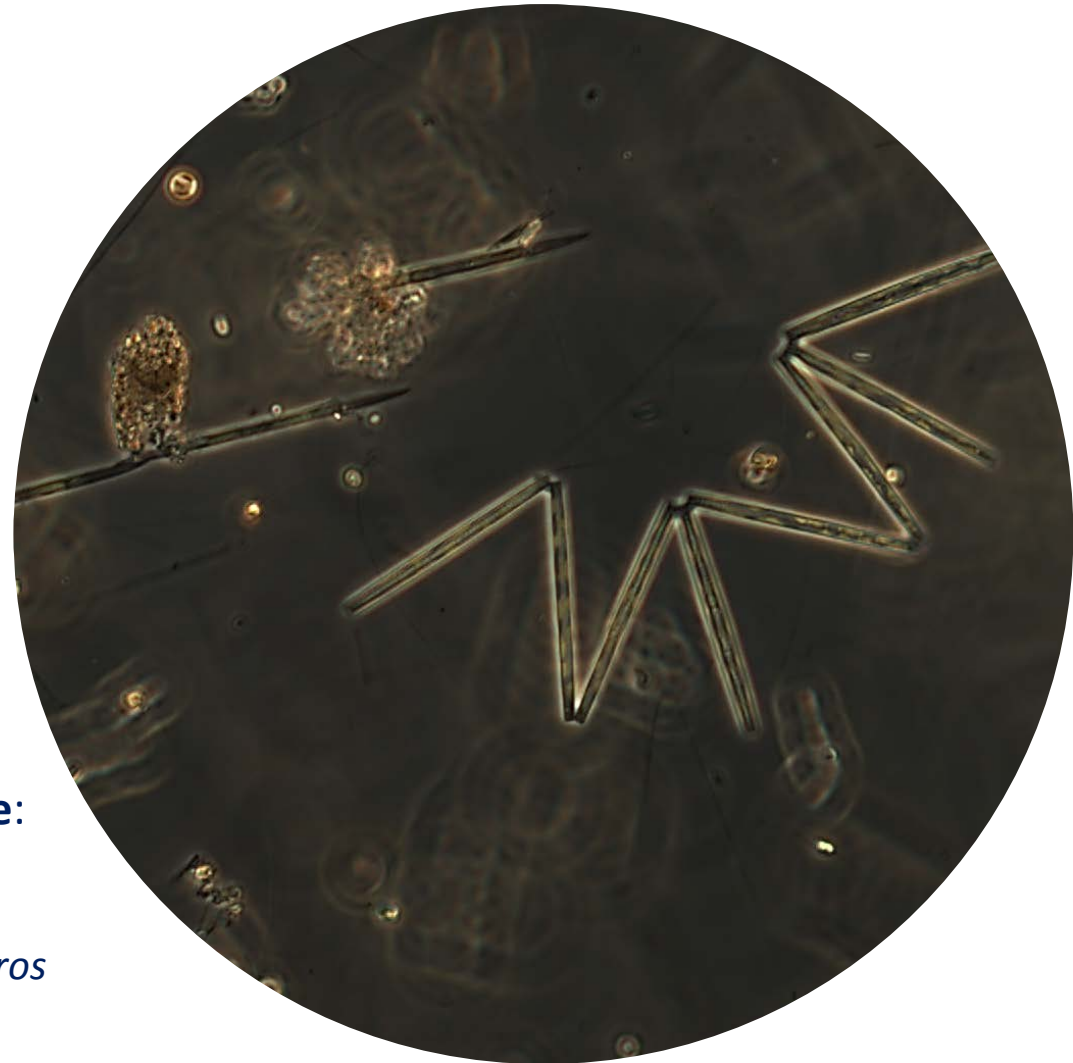
### Most abundant diatom species:

A small colonial *Chaetoceros* (30%)  
*Chaetoceros socialis* (8.4%)

### Most abundant species in the net sample:

*Chaetoceros pseudocurvisetus*  
*Chaetoceros curvisetus*  
A small colonial species of the genus *Chaetoceros*

Notes:



Live sample