

MC 1094

18/02/2014

Meso-zooplankton abundance:

587 ind. m⁻³

Long-term average (February 1984-2013):

806 ± 366 ind. m⁻³

Most abundant taxa : Appendicularia

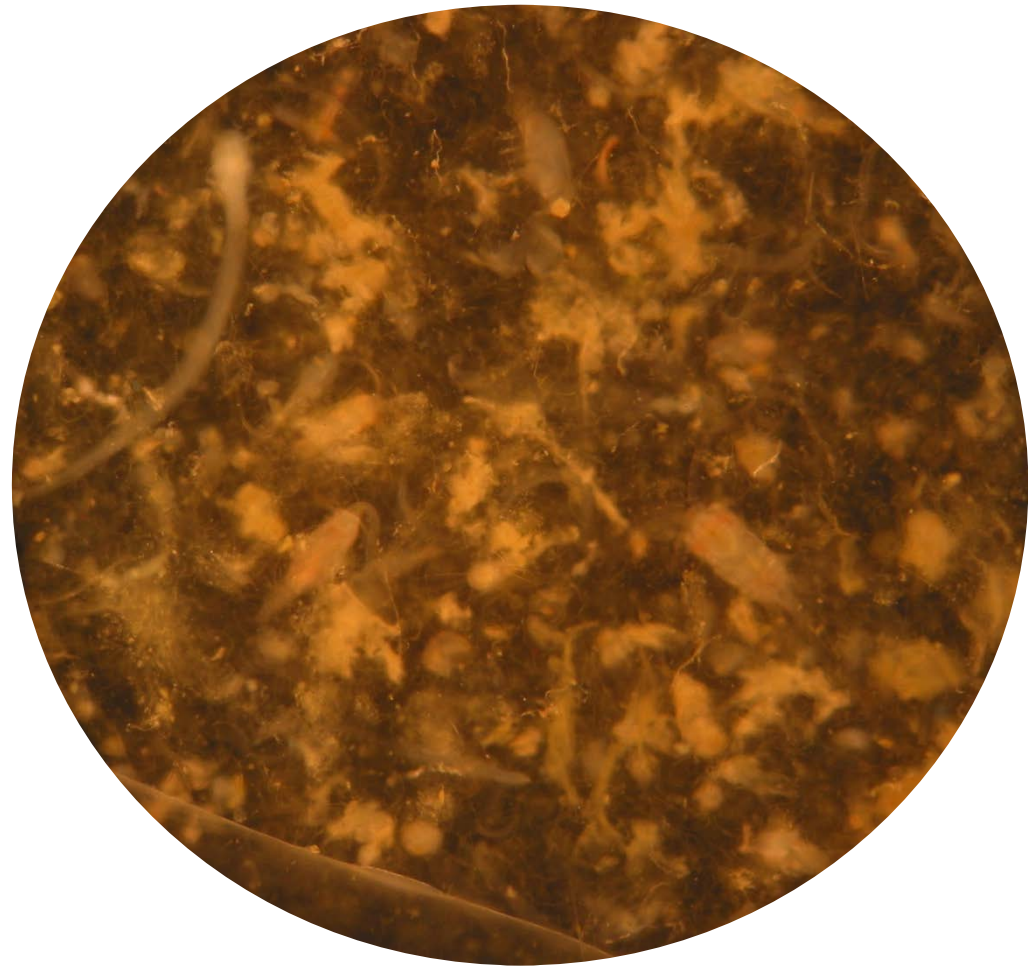
Oikopleura sp. 47% and *Fritillaria* sp. 5%,
copepods *Clausocalanus* spp. 8%

Dry mass: 4.6 mg m⁻³ (weight after 24h)

Long-term average (January, 1984-2014):

4.1 ± 1.2 mg m⁻³

Note: phytoplankton bloom



Live sample