

## MC 1095

03/03/2014

### Phytoplankton abundance:

$6.5 \times 10^3$  cells ml<sup>-1</sup>

### Phytoplankton groups percentage:

flagellates: 55.6%, diatoms: 41.4%,  
dinoflagellates: 3.0%, coccolithophores: 0%

### Most abundant diatom species:

*Chaetoceros tenuissimus* (10.5%)

*Chaetoceros socialis* (7.1%)

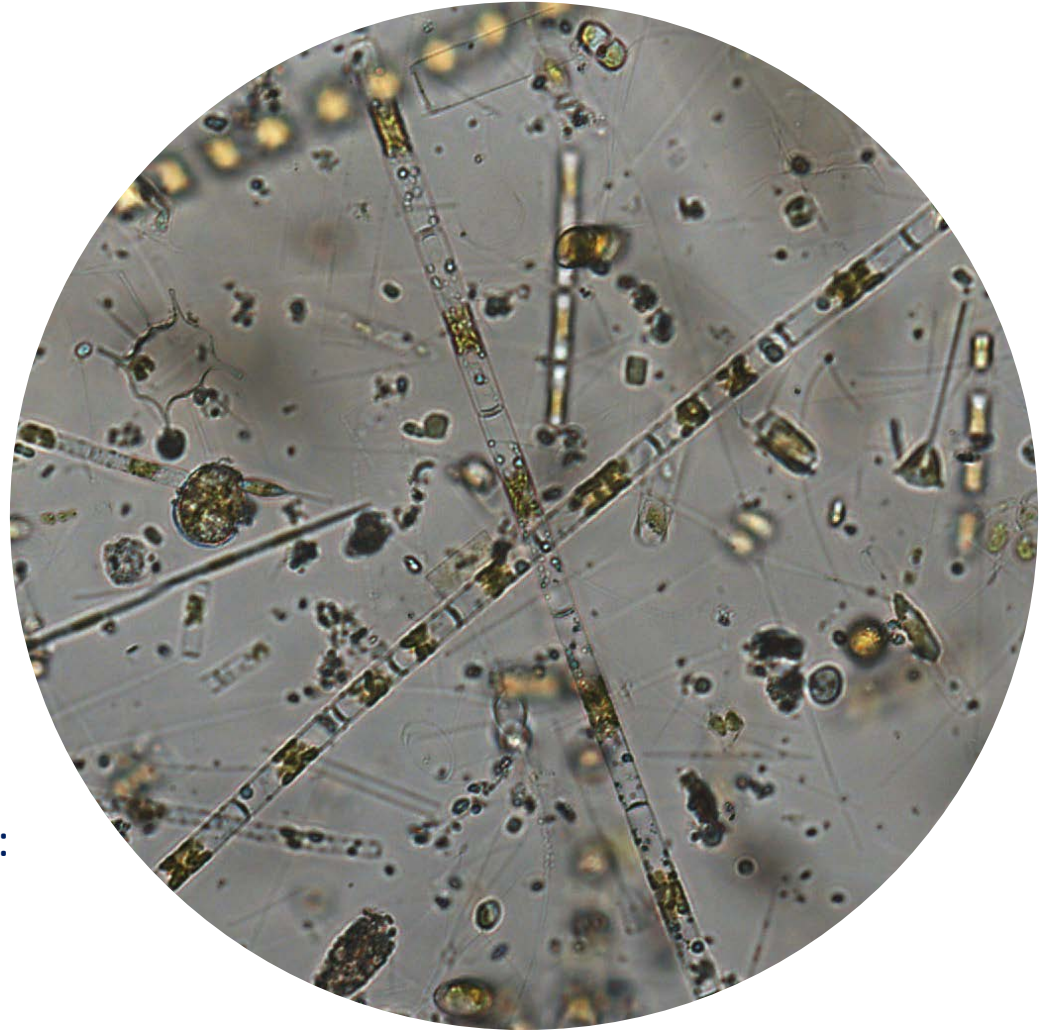
*Chaetoceros curvisetus* (5.8%)

### Most abundant species in the net sample:

*Chaetoceros curvisetus*

*Leptocylindrus convexus*

*Dactyliosolen blavyanus*



Notes:

Live sample