

MC 1096

10/03/2014

Phytoplankton abundance:

2.7×10^3 cells ml⁻¹

Phytoplankton groups percentage:

flagellates: 60.4%, diatoms: 35.5%,
dinoflagellates: 3.4%, coccolithophores: 0.7%

Most abundant diatom species:

Chaetoceros curvisetus (6.8%)

Thalassiosira mediterranea (4.9%)

Chaetoceros socialis (4.6%)

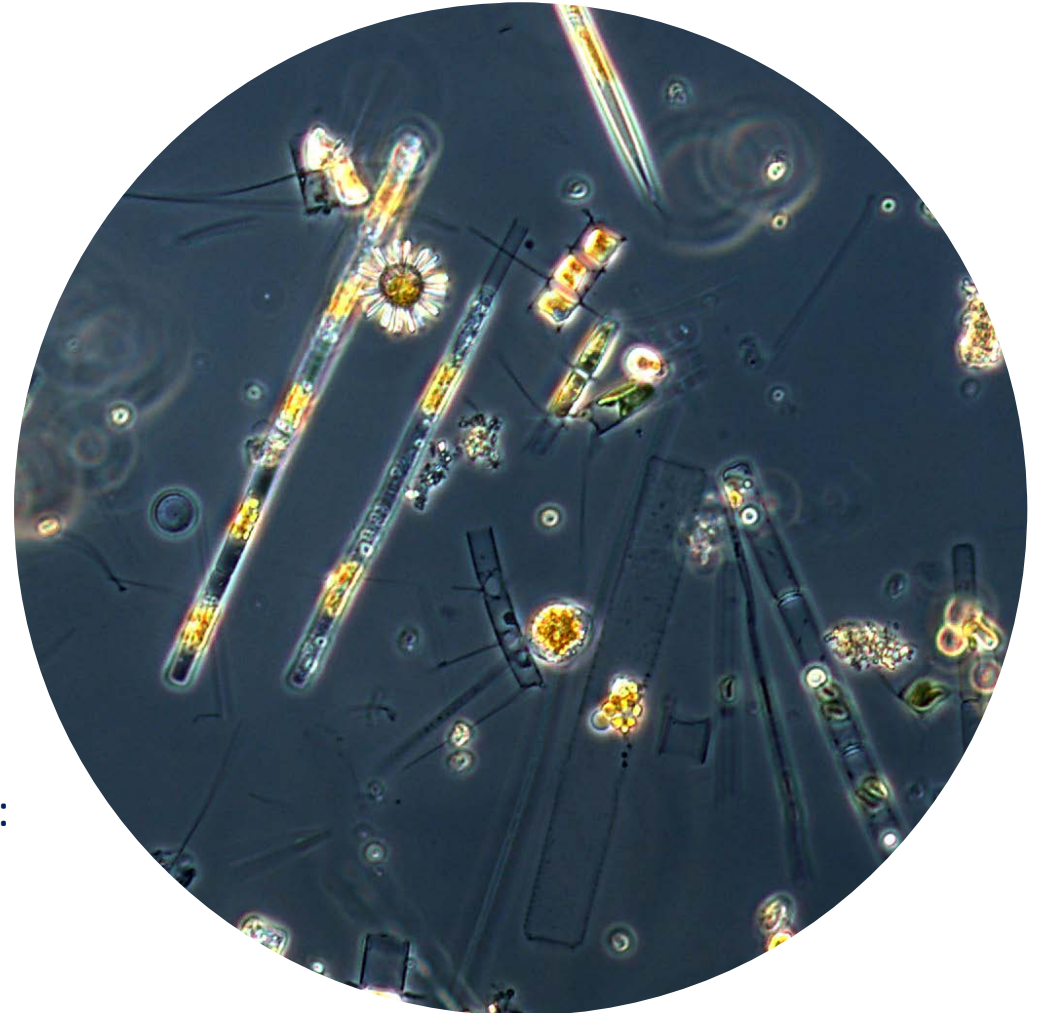
Most abundant species in the net sample:

Chaetoceros curvisetus

Chaetoceros brevis

Leptocylindrus convexus

Notes: preliminary quantitative analysis



Live sample