

MC 1097

18/03/2014

Phytoplankton abundance:

1.5×10^4 cells ml⁻¹

Phytoplankton groups percentage:

diatoms: 67%, flagellates: 37.7%,
dinoflagellates: 1.3%, coccolithophores: 0.6%

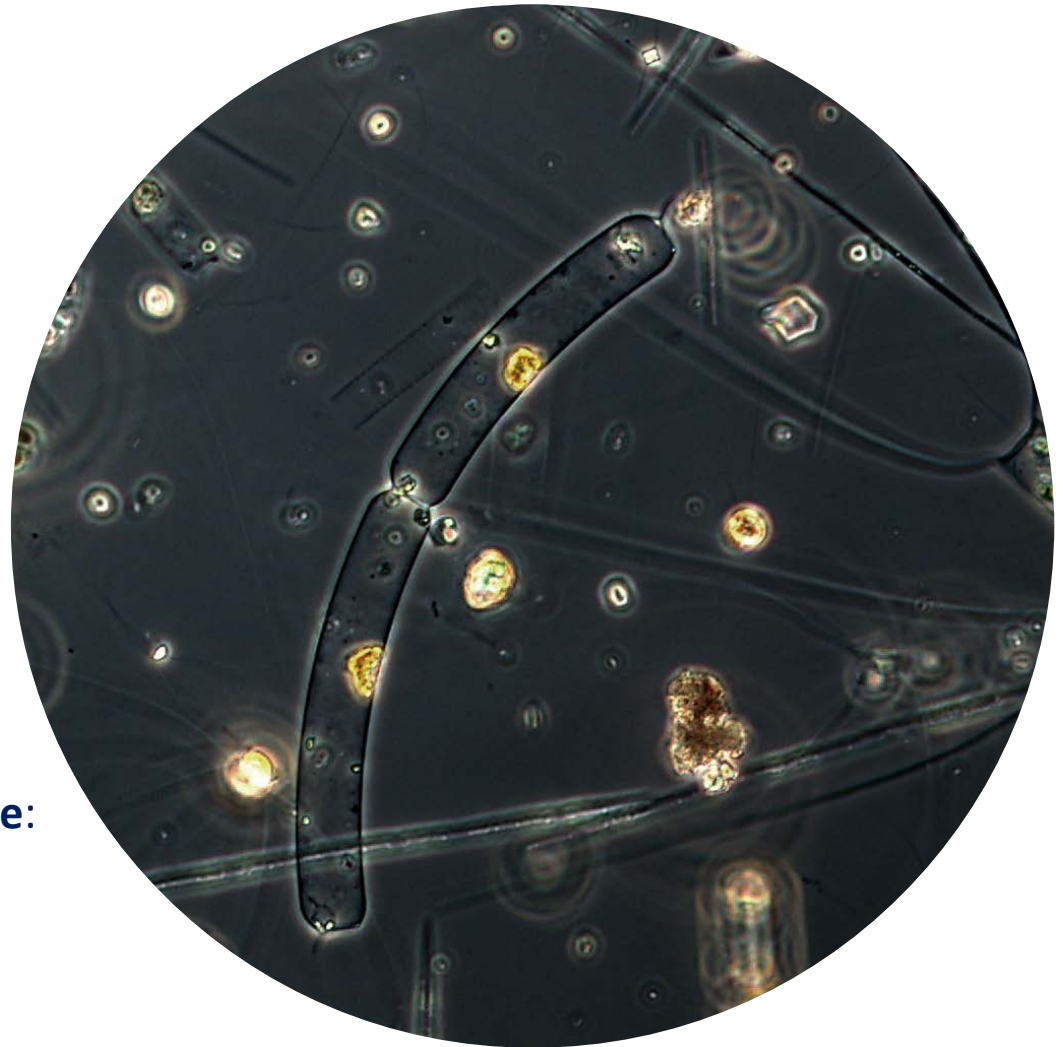
Most abundant diatom species:

Chaetoceros tenuissimus (20.6%)
Chaetoceros socialis (10.8%)
Pseudo-nitzschia delicatissima (10.6%)

Most abundant species in the net sample:

Chaetoceros curvisetus
Dactyliosolen blavyanus
Pseudo-nitzschia delicatissima

Notes: preliminary quantitative analysis



Live sample