

MC 1100

24/04/2014

Phytoplankton abundance:

2.7×10^4 cells ml⁻¹

Phytoplankton groups percentage:

flagellates: 93.7%, diatoms: 4.8%,
dinoflagellates: 1.5%

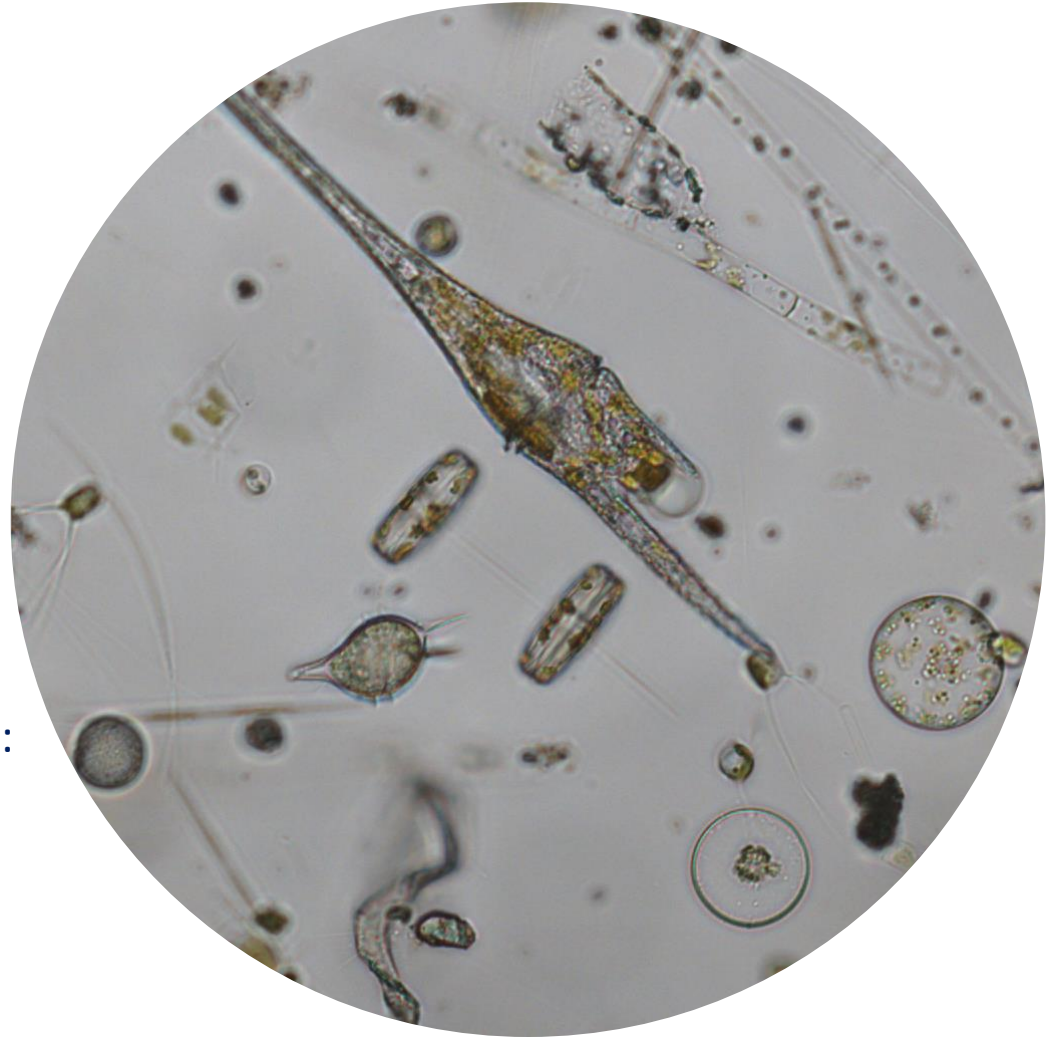
Most abundant taxa:

Heterotroph flagellates (52.5%)
Chrysochromulina spp. (2.5%)

Most abundant species in the net sample:

Proboscia alata
Pseudo-nitzschia delicatissima
Leptocylindrus danicus

Notes: preliminary quantitative analysis



Live sample