

## MC 1101

30/04/2014

### Phytoplankton abundance:

$9.7 \times 10^3$  cells ml<sup>-1</sup>

### Phytoplankton groups percentage:

flagellates: 58.6%, diatoms: 33.7%,  
dinoflagellates: 5.0%, coccolithophores: 2.7%.

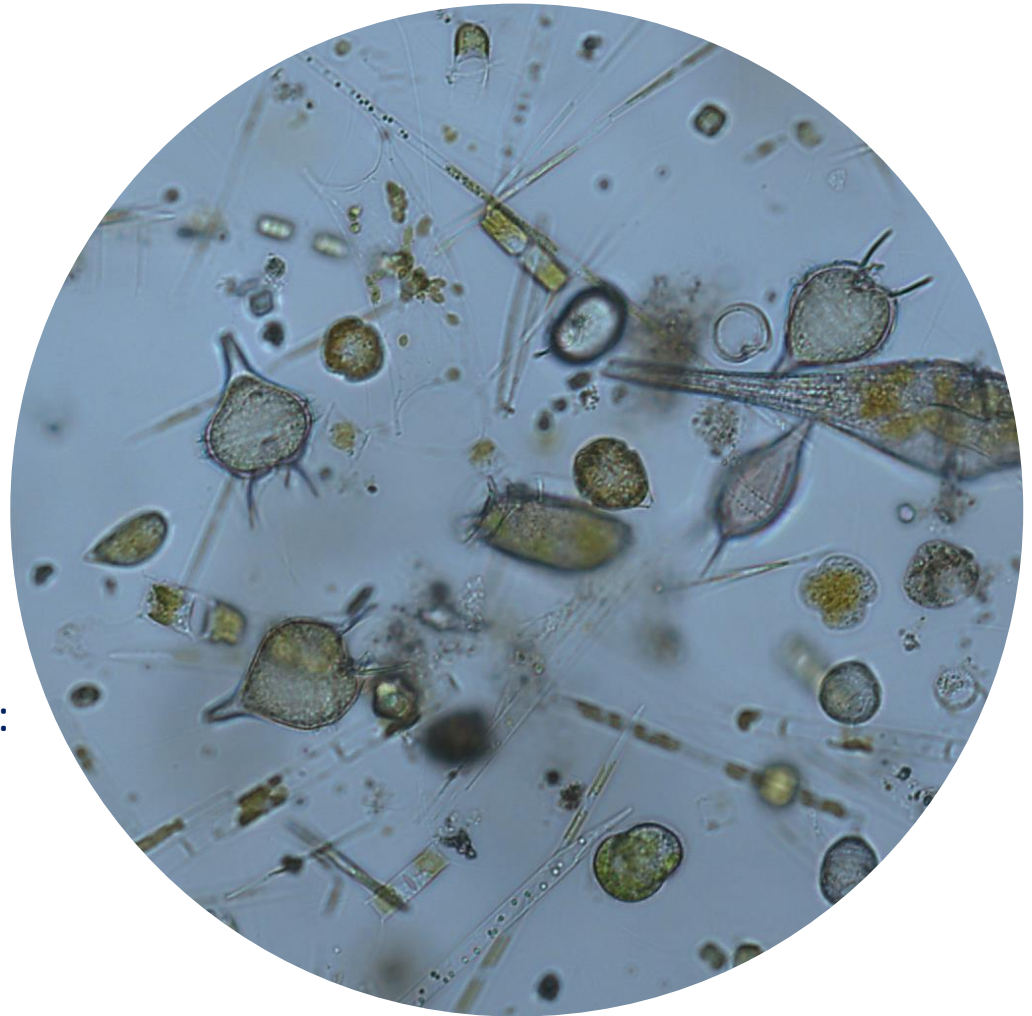
### Most abundant diatom species:

*Pseudo-nitzschia delicatissima* (8.8%)  
*Thalassiosira* spp. (5.2%)

### Most abundant species in the net sample:

*Scrippsiella* cf. *trochoidea*  
*Prorocentrum triestinum*  
*Protoperidinium diabolus*

*Notes: preliminary quantitative analysis*



Live sample