

Phytoplankton abundance:

1.2×10^3 cells ml⁻¹

Phytoplankton groups percentage:

flagellates: 81.0%, diatoms: 12.7%,

dinoflagellates: 3.3%, coccolithophores: 3.0%

Most abundant taxa:

Undetermined Cryptophyceae (7.1%)

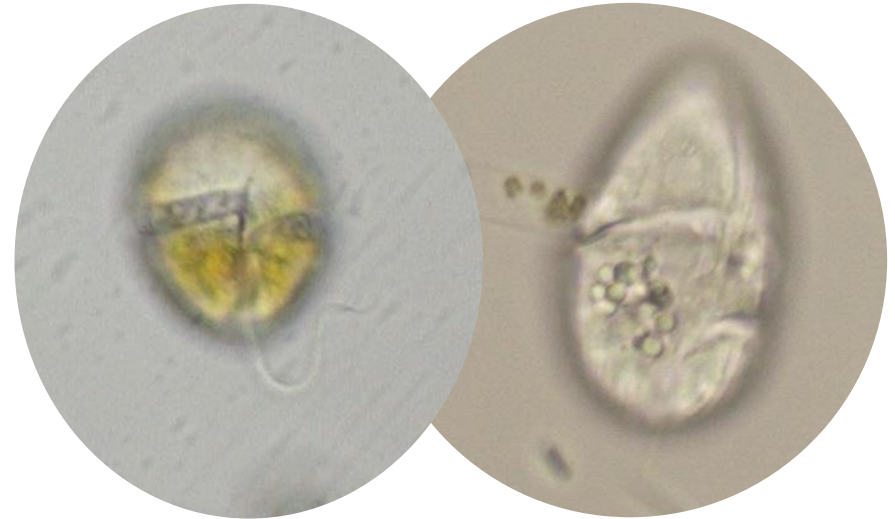
Chrysochromulina spp. (3.8%)

Most abundant species in the net sample:

Syracosphaera pulchra

Prorocentrum triestinum

NOTES:



Live sample

Main species in the picture: *Gyrodinium* spp.