

**Meso-zooplankton abundance:**

1972 ind. m<sup>-3</sup>

**Long-term average (October, 1984-2017):**

1619 ± 822 ind.m<sup>-3</sup>

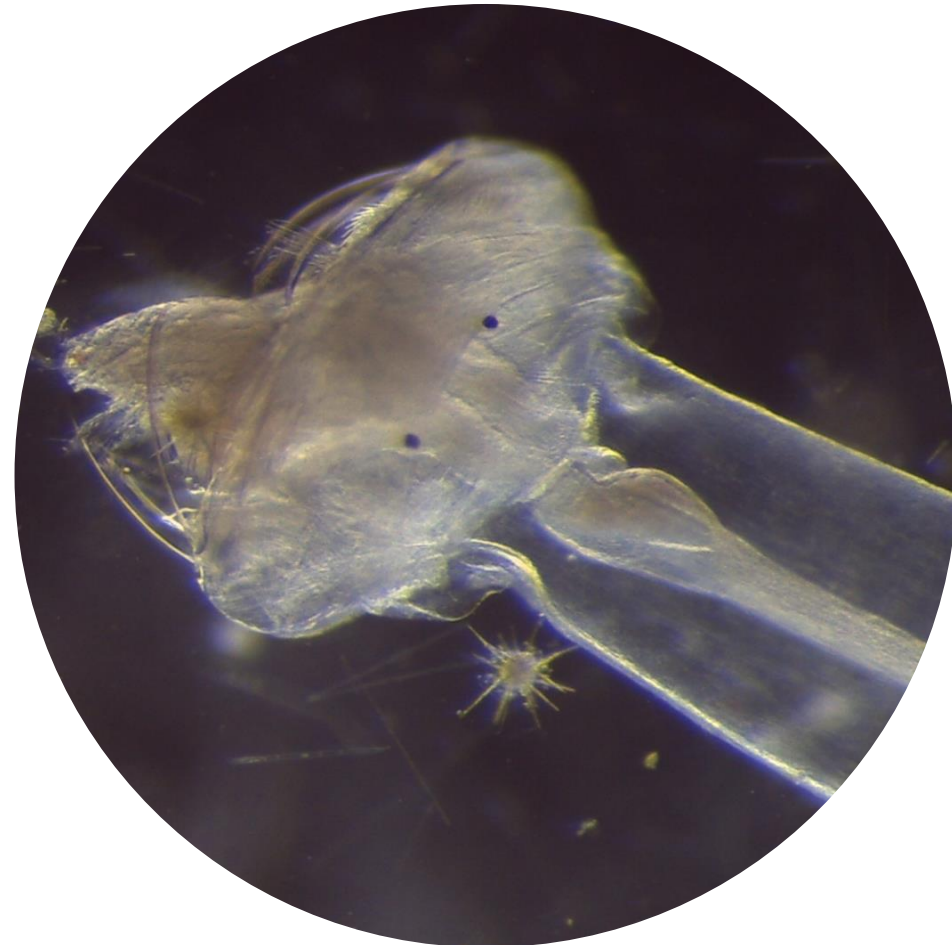
**Most abundant taxa :**

- Copepods (81%)
- Cladocerans (10%)

**Dry mass:** 18.7 mg m<sup>-3</sup>

**Long-term average (October, 1984-2018):**

9 ± 4.7 mg m<sup>-3</sup>



*Detail of mouth-parts of Sagitta  
with prey, which is usually a copepod*