

MC 1075

08/10/2013

Meso-zooplankton abundance:

1061 ind. m⁻³

Long-term average (October, 1984-2011):

1511 ± 634 ind. m⁻³

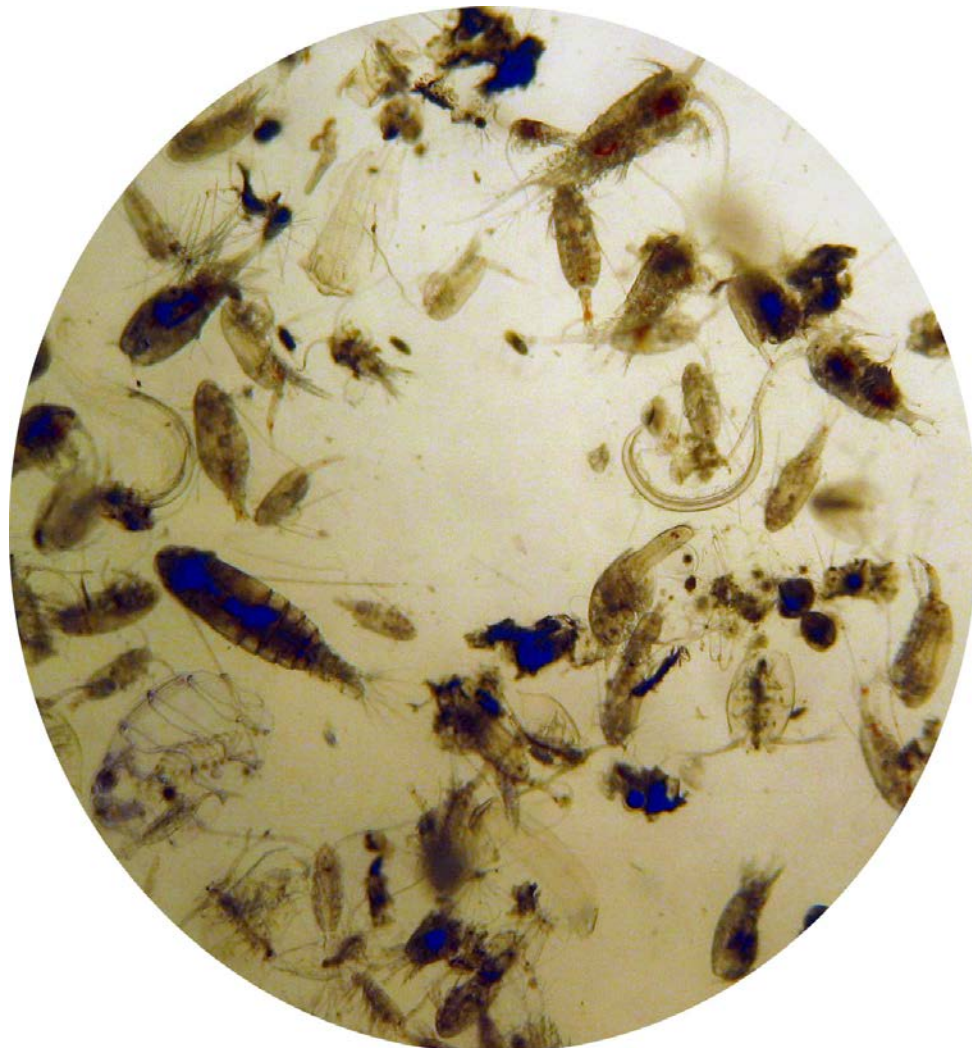
Most abundant taxa: copepods

Temora stylifera and *Clausocalanus furcatus*

Dry mass: 7.4 mg m⁻³ (02/10/13, MC 1074)

Long-term average (October, 1984-2012):

9.5 ± 4.6 mg m⁻³



Today's alive sample