

MC 1065

30/07/2013

Phytoplankton abundance:

$7,2 \times 10^3$ cells ml⁻¹

Phytoplankton groups percentage:

flagellates: 64,5%, diatoms: 29,,5%,
dinoflagellates: 3,0%, coccolithophores: 3,0%

Most abundant taxa:

Cryptophyceae (16,8%)

Thalassionema nitzschioides (5,1%)

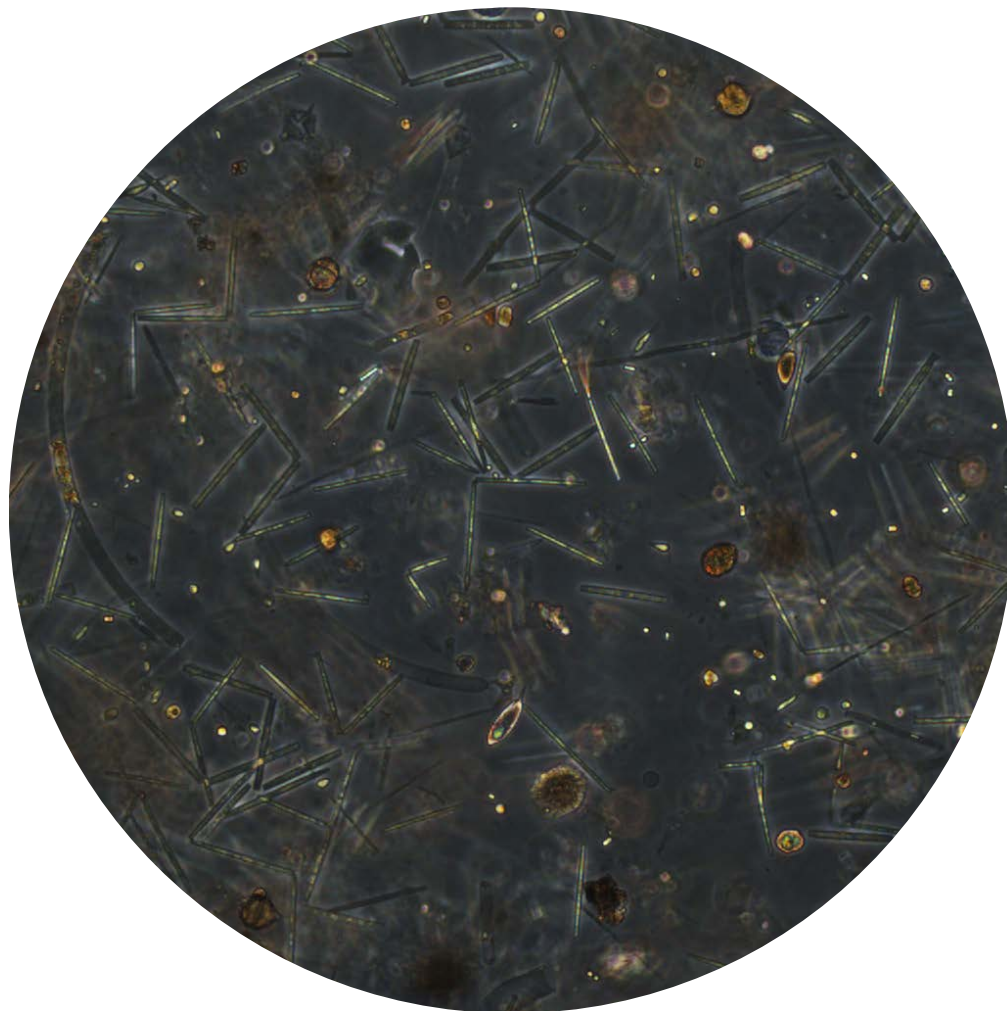
Pseudo-nitzschia delicatissima (4,5%)

Most abundant species in net sample:

Thalassionema nitzschioides

Skeletonema menzeli

Notes: preliminary quantitative analysis



Live sample