

## MC 1069

27/08/2013

### Phytoplankton abundance:

$1,6 \times 10^4$  cells ml<sup>-1</sup>

### Phytoplankton groups percentage:

diatoms: 50,5%, flagellates: 37,5%,  
coccolithophores: 1,3%, dinoflagellates: 0,7%

### Most abundant diatoms:

*Chaetoceros socialis* (27,5%)

*Pseudo-nitzschia galaxiae* (7,3%)

*Pseudo-nitzschia multistriata* (3,4%)

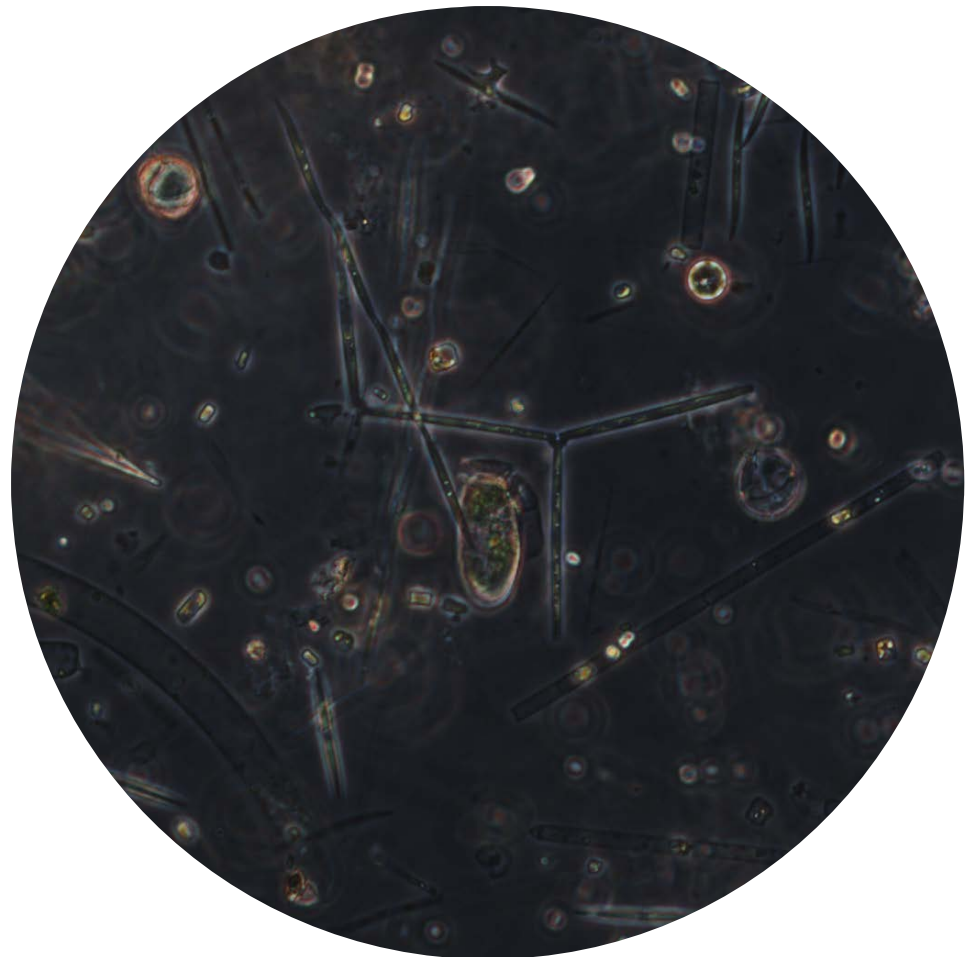
### Most abundant species in net sample:

*Pseudo-nitzschia multistriata*

*Thalassionema nitzschioides*

*Dinophysis sacculus*

Notes: preliminary quantitative analysis



Live sample