

## MC 1070

03/09/2013

### Phytoplankton abundance:

$9,8 \times 10^3$  cells ml<sup>-1</sup>

### Phytoplankton groups percentage:

flagellates: 55%, diatoms: 43,6%,  
dinoflagellates: 0,95%, coccolithophores: 0,4%

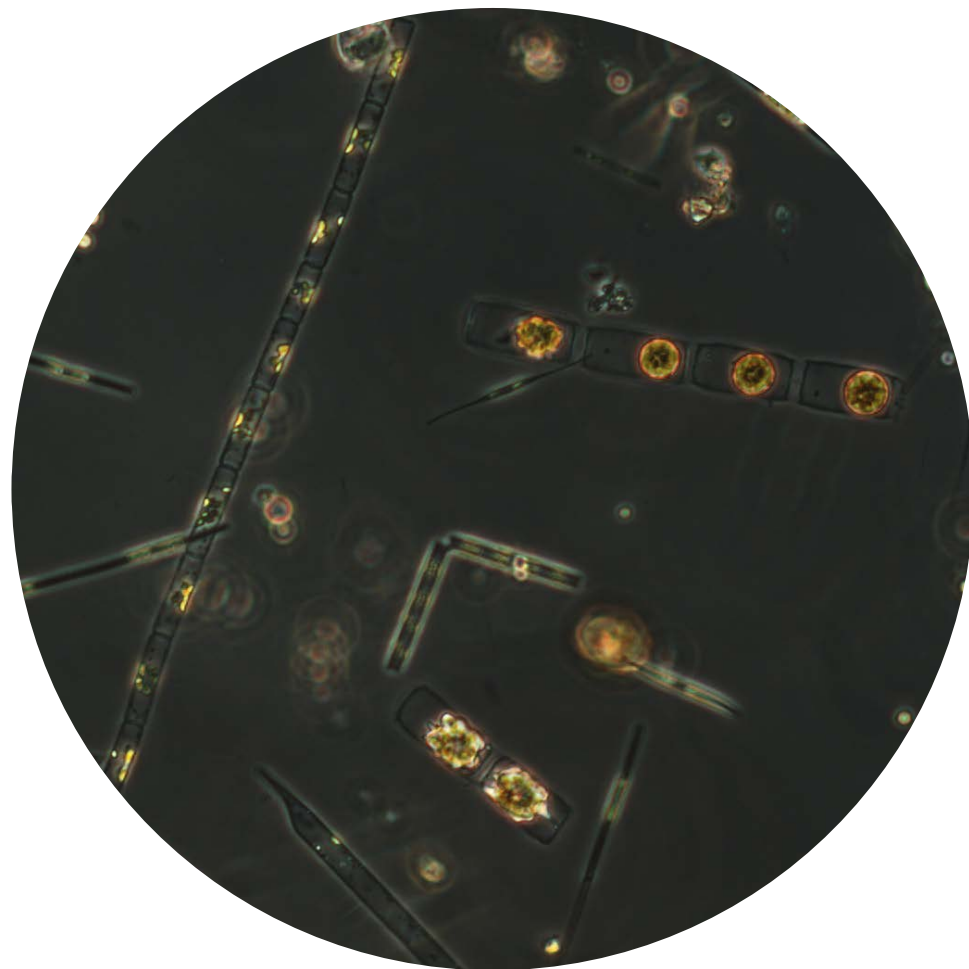
### Most abundant diatoms:

*Skeletonema menzeli* (9,15%)  
*Tenuicylindrus belgicus* (8,5%)  
*Chaetoceros tenuissimus* (6,6%)

### Most abundant species in net sample:

*Lithodesmium* cf. *undulatum*  
*Pseudo-nitzschia multistriata*  
*Tenuicylindrus belgicus*

Notes: preliminary quantitative analysis



Live sample