

## MC 1065

30/07/2013

### Phytoplankton abundance:

$7,2 \times 10^2$  cells ml<sup>-1</sup>

### Phytoplankton groups percentage:

flagellates: 64,5%, diatoms: 29,,5%,

dinoflagellates: 3,0%, coccolithophores: 3,0%

### Most abundant taxa:

Cryptophyceae (16,8%)

*Thalassionema nitzschioides* (5,1%)

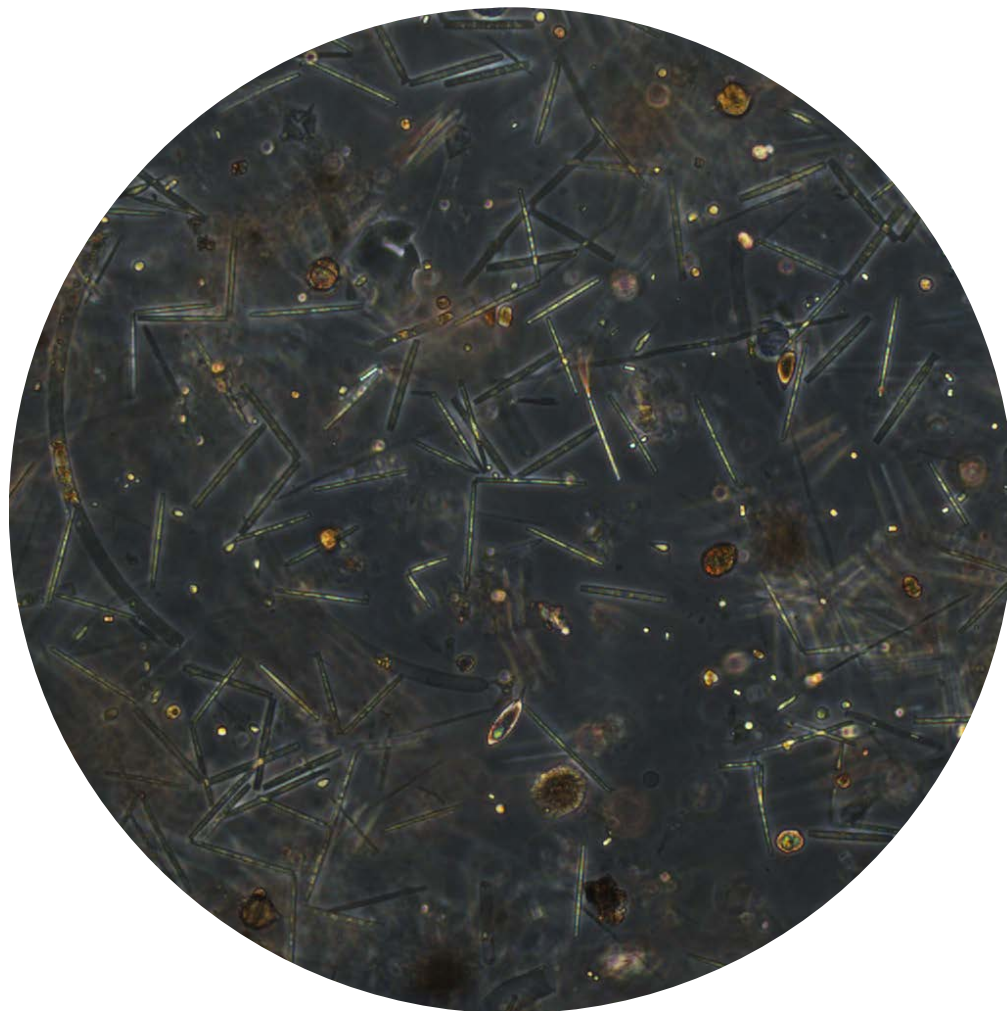
*Pseudo-nitzschia delicatissima* (4,5%)

### Most abundant species in net sample:

*Thalassionema nitzschioides*

*Skeletonema menzelii*

Notes: preliminary quantitative analysis



Live sample