

## MC 1065

30/07/2013

### Meso-zooplankton abundance:

8413 ind. m<sup>-3</sup>

### Long-term average (July, 1984-2011):

2694 ± 1239 ind. m<sup>-3</sup>

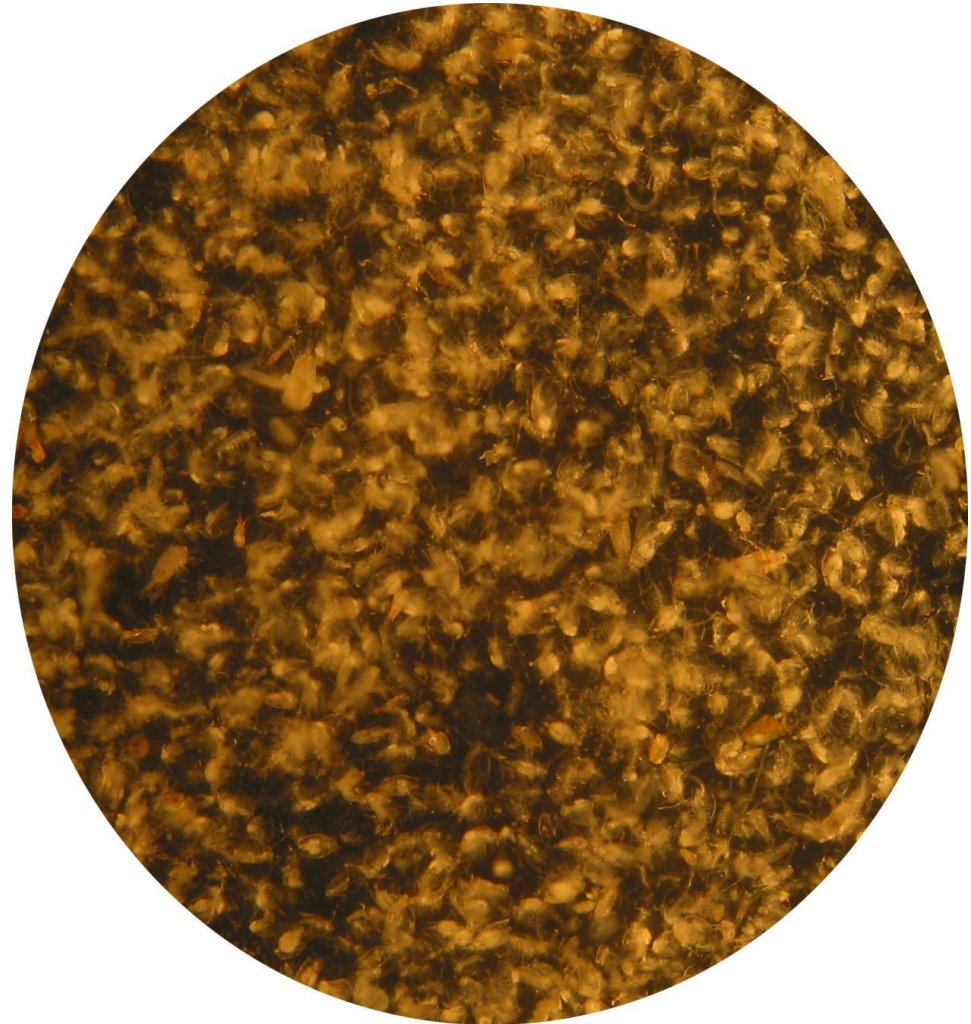
### Most abundant taxa: cladoceran

*Penilia avirostris*

Dry mass: 12.3 mg m<sup>-3</sup> (23/07/13, MC 1064)

### Long-term average (July, 1984-2012):

12.6 ± 4.6 mg m<sup>-3</sup>



Today's alive sample